



Westerly Griffon MK 1

£6,995 • Brightlingsea United Kingdom (UK) • Used • 1981

Presented by

Peter Marchant
Phone: 44(0)1206302003

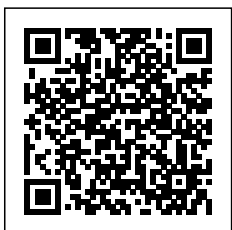
Morgan Marine

The Boatyard, Shipyard
Estate
CO7 0AR Colchester
United Kingdom (UK)



Details

Make:	Westerly
Model:	Griffon MK 1
Year:	1981
Condition:	Used
Engine:	, 300 hp
Engine type:	
Length:	7.92 m (25.98 ft)
Beam:	2.82 m (9.25 ft)
Cabins:	0
Berths:	0



Morgan Marine



7zea.com

Description

EN

1981 Westerly Griffon MK 1 bilge keel just in at Morgan Marine. A comfortable and forgiving cruising yacht with a pedigree of safe sail boating. With Volvo Penta MD7A 13HP inboard diesel engine, full galley, toilet compartment, cockpit tent and navigation electronics. Well maintained and well equipped. Angelica has a good paper history of careful owner maintenance. Currently ashore at Brightlingsea - ready to launch for the 2025 season!

Deck: QCR anchor with chain and rope. Spare kedge anchor. Hull antifouled 2024. Stainless Steel Pushpit and Pulpit with guard rails and alloy stanchions. Kemp mast and boom. Slab reefing mainsail. Grab rails. Sprayhood dodgers. Fenders and Lines. Stainless steel boarding ladder. Spinlock clutches. Lewmar 30 sheet winches x2. Lewmar 10 control winches x2. Main sail with cover. 2x boat hooks. Coastal distress flares. Horseshoe lifebuoy. Ensign. Mooring cleats.

Cabin: Steps down to saloon area. 6 berths / 2 cabins with 6ft headroom in main saloon. Forward V shaped berth with infill cushion, sleeve, hatch to deck and hanging storage. Interior lights. Port side stern single berth. Saloon with port and starboard bench style seating with folding table. Toilet compartment with toilet and mirror. Fully galley with Voyager gas stove and cooker, sink, cupboard storage and galley utensils. 2x gas bottles. Clock and Barometer set. Self made 2x wooden door with glass perspex in galley.

Cockpit: Deep, safe cockpit with non-slip flooring. Cockpit removable cushioned bench style seating with generous storage underneath. Tiller steering.

Electronics: Garmin GPSMap 550 chart plotter. Autohelm ST1000 Auto pilot. Raymarine ST40 wind, speed and depth instruments. Ship to Shore VHF radio. Garmin 120 XL GPS. Solar panel on bow. Plastimo compass. Cabin and interior lights. Navigation lights. Radio / CD player. Bilge pump.

Machinery: Volvo Penta MD7A 13 HP shaft drive inboard diesel with twin bladed propeller and rope cutter - Last engine service 2023.

General information

Make:	Westerly
Model:	Griffon MK 1
Year:	1981
Condition:	Used

Engine

Engine:	, 300 hp
Engine type:	

Measurements

Length:	7.92 m (25.98 ft)
Beam:	2.82 m (9.25 ft)
Deep:	0.99 m (3.25 ft)
Weight:	0 ()

Accommodation

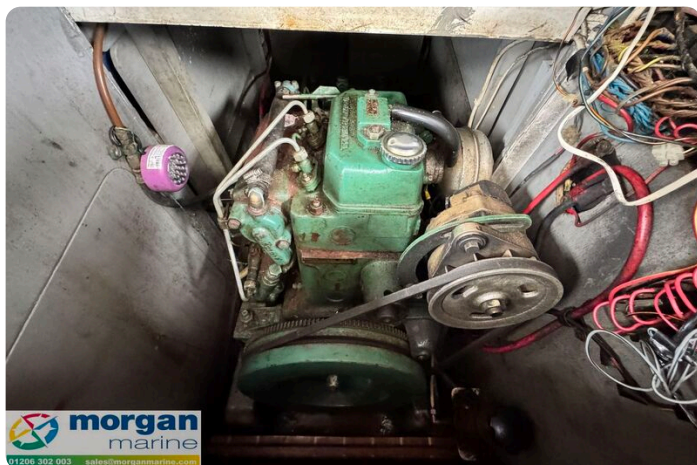
Cabins:	0
Berths:	0



Westerly Griffon MK1 - Main



Westerly Griffon MK1 - seating



Westerly Griffon MK1 - engine



Westerly Griffon MK1 - Garmin



Westerly Griffon MK1 - cockpit cushions



Westerly Griffon MK1 - bow



Westerly Griffon MK1 - front drone



Westerly Griffon MK1 - top view



Westerly Griffon MK1 - anchor



Westerly Griffon MK1 - spray hood



Westerly Griffon MK1 - mast



Westerly Griffon MK1 - tails



Westerly Griffon MK1 - hull



Westerly Griffon MK1 - stern 1



Westerly Griffon MK1 - ladder



Westerly Griffon MK1 - rudder steering



Westerly Griffon MK1 - stern



Westerly Griffon MK1 - side one



Westerly Griffon MK1 - prop



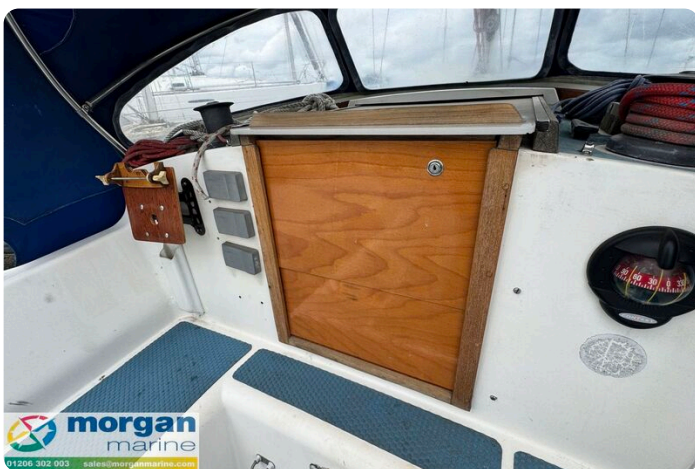
Westerly Griffon MK1 - cockpit



Westerly Griffon MK1 - wheelhouse



Westerly Griffon MK1 - Compass



Westerly Griffon MK1 - door



Westerly Griffon MK1 - gauges



Westerly Griffon MK1 - cockpit straight



Westerly Griffon MK1 - hatch



Westerly Griffon MK1 - rails



Westerly Griffon MK1 - anchor with chain



Westerly Griffon MK1 - front view



Westerly Griffon MK1 - hatch 1



Westerly Griffon MK1 - hatch 2



Westerly Griffon MK1 - solar panel



Westerly Griffon MK1 - cockpit floor



Westerly Griffon MK1 - saloon



Westerly Griffon MK1 - clock



Westerly Griffon MK1 - chart plotter



Westerly Griffon MK1 - VHF radio



Westerly Griffon MK1 - solar charge



Westerly Griffon MK1 - bench seat



Westerly Griffon MK1 - cooker



Westerly Griffon MK1 - switch panel



Westerly Griffon MK1 - door clear



Westerly Griffon MK1 - berth



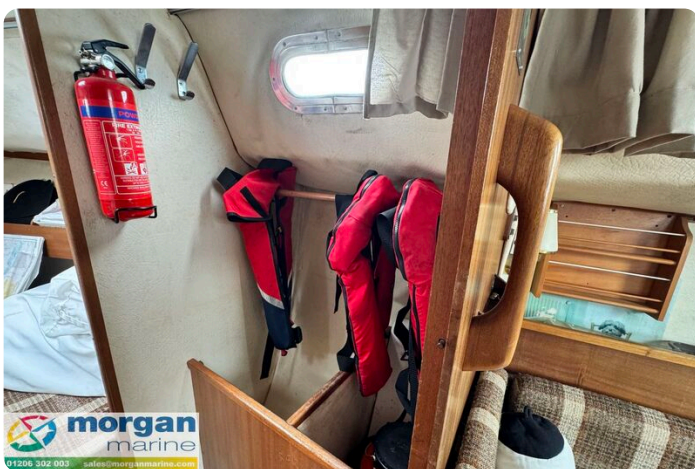
Westerly Griffon MK1 - bench



Westerly Griffon MK1 - saloon seating



Westerly Griffon MK1 - table



Westerly Griffon MK1 - hanging storage



Westerly Griffon MK1 - cabin door



Westerly Griffon MK1 - toilet



Westerly Griffon MK1 - V berth

Morgan Marine

The Boatyard, Shipyard Estate
CO7 0AR Colchester
United Kingdom (UK)

Phone: 44(0)1206302003

<https://morganmarine.com>

