



# Sunseeker 88 Yacht

€2,475,000 • Corfu Greece • Used • 2011

## Presented by

Justin Garwell  
Phone: +44 (0) 1305 766504

**JD YACHTS LIMITED**  
80 THE ESPLANADE  
DT4 7AA WEYMOUTH  
United Kingdom (UK)

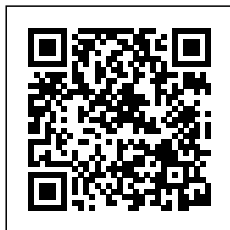


## Details

Make:	Sunseeker
Model:	88 Yacht
Year:	2011
Condition:	Used
Engine:	CATERPILLAR C32 ACERT, 1902 hp
Engine type:	
Fuel type:	Diesel
Length:	26.87 m (88.16 ft)
Beam:	6.22 m (20.41 ft)
Cabins:	0
Berths:	0



JD YACHTS  
LIMITED



7zea.com

# Description

---

ENG  
2011. 2 x 1902 HP CATERPILLAR C32 ACERT  
10 berths in 4 cabins plus crew  
Lying: Corfu Greece

ENG  
Extras

3 X 24-Inch Garmin GPSMAP Touchscreen Chartplotters to Lower Helm  
2 X 9-Inch Garmin GPSMAP Touchscreen Displays to Lower Helm  
2 X 12-Inch Garmin GPSMAP Touchscreen Chartplotters to Upper Helm  
2 X 9-Inch Garmin GPSMAP Touchscreen Displays to Lower Helm  
Garmin Dash Mounted Remote Controls for both Helm Stations  
Garmin Panoptix 3D Sonar  
Open Array Radar Scanner  
Garmin Autopilot Head Units to both Helm Stations  
Garmin MFD to both Helm Stations  
Garmin VHF to both Helm Stations  
TRAC Fin Stabilisers  
TRAC Hydraulic Bow & Stern Thrusters  
Opening Flybridge Hardtop  
Underwater lights - Aqualuma Series 6 white LED  
Watermaker  
Ice Maker to Cockpit Wetbar  
Ice Maker to Flybridge Wetbar  
Wine Fridge to Saloon  
Washing Machine to Crew Quarters  
Dishwasher to Galley  
2 X Onan Generators

Standard Specification

Principal Features

Air conditioning  
Hydraulic lifting platform  
Electric winch and capstan at bow with foredeck controls  
Manual side opening helm and galley access doors  
Hot and cold swimming shower at stern  
Power-assisted steering  
Flybridge wetbar with sink, ice maker, fridge and griddle  
Flatscreen televisions and DVD/CD player in all guest cabins and crew mess  
Surround-sound system DVD/CD/radio in saloon and master stateroom  
iPod docking station in main saloon  
Aft cockpit bar unit  
Electric refrigerator/freezer with ice maker  
Ceramic hob, microwave/oven and dishwasher  
Electronic depth and speed displays  
Radar/chart plotter with GPS  
Autopilot  
VHF radio (dual station)  
Hot and cold water system  
Fresh water pump  
Toilet system with holding tank  
Automatic fire extinguishing system for engine room  
Automatic bilge pumps  
Slow speed generators with silent exhausts  
Fire detection system  
AC shorepower/battery charger  
Bow thruster  
Stern thruster  
Trim tabs  
Remote controlled spotlight at bow

Deckwash with outlets forward, aft and flybridge  
Fresh water marina connection  
Teak bathing platform and steps  
Teak side decks  
Teak cockpit floor  
Screen demisters  
Stern winches

Construction

Hand-laid GRP  
Gel coat including stripes  
Vinylester skin coat with powderbound mat  
Stitched multi-axial reinforced single skin bottom  
Balsa cored hull topsides  
PVC foam cored deck and superstructure  
Hull stiffened with longitudinal stringers supported by transverse bulkheads and floors

Flybridge

Self draining cockpit  
Acrylic deflecting spray screen  
Seating areas  
Storage lockers under seating  
Teak dining tables (natural finish) with GRP bases  
Upholstered sunbathing area forward  
Stainless steel aft safety rails  
Glass holders  
Wetbar unit  
Sink in wetbar unit  
Ice maker in wetbar unit  
Fridge in wetbar unit  
Ceramic electric griddle in wetbar unit  
Deckwash outlet  
Low-level flybridge lighting 24v  
Radar arch structure  
Radar chair with navigation light assembly  
Overhead lighting on underside of radar arch 24v  
Two pairs marine speakers (connected to dedicated CD/radio in saloon & controlled by remote keypad at flybridge helm)

Flybridge Helm

Two helm seats  
Hydraulic steering  
Duplicate engine controls  
Analogue engine instrumentation  
Autopilot repeater  
Radar/chart plotter with GPS repeater  
Depth and speed multi display  
VHF second station  
Remote spotlight control  
Magnetic compass  
Steering indicator  
Trim tab control  
Horn control  
Radio/CD remote keypad  
Waterproof plug and socket 12v

Deck

Fittings all in 316 stainless steel and chromed bronze  
Pair stainless steel bow cleats and fairleads  
Stainless steel spring cleats with chafing bars  
Pair stern cleats and fairleads  
Stainless steel pulpit and cockpit rails  
Stainless steel fendering with rubber insert  
Stainless steel bow roller with anchor stop and devil's claw  
Single electric windlass (Lewmar V8) 24v, starboard side, foredeck control only  
Single electric capstan (Lewmar C4) 24v, port side, foredeck

control only  
Anchor 80kg claw-type (galvanised)  
Anchor chain 100 metres/328 feet (12mm diameter, galvanised)  
Stainless steel bow plate  
Deckwash with outlets forward and aft  
Chain locker  
Curved direct glazed safety glass windscreen  
Pantograph windscreen wipers and washers  
Fresh-water filler  
Fuel fillers port and starboard  
IMCO navigation lights  
Remote controlled spotlight at bow  
Low-level courtesy lights on side decks 24v  
Skylight from VIP stateroom  
Bow seat  
Bow sunbathing pad  
Bow teak table top (natural finish)  
Glass holders

#### Aft Cockpit

Teak laid cockpit floor  
Self-draining  
Stairs to flybridge with teak treads  
Aft fixed bench seating  
Teak table (natural finish) with folding leaves on GRP base  
Stern safety gates  
Engine room access hatch  
2 x stern capstan winches (Lewmar C4)  
24v and fairleads  
Overhead cockpit lights 24v  
Low-level courtesy lights 24v  
Pair marine speakers connected to saloon  
AV system with Bose PMCI remote  
Wetbar unit  
Coolbox in wetbar unit  
Rubbish bin in wetbar unit

#### Bathing Platform

Teak-laid hydraulic lifting bathing platform (maximum lifting capacity 650kgs/1433lbs, maximum tender weight 550kgs/1212lbs)  
Stairs to aft cockpit with teak treads  
Foldout stainless steel swimming ladder  
Hot and cold hand-held swimming shower  
Fresh-water marina connection  
Television and telephone marina connection  
Access to crew quarters  
Dockside AC connection 1 x 100 amp  
Glendinning Cablemaster  
Euro spec only: 5m hydraulic telescopic passerelle

#### Saloon and Dining

Stainless steel framed sliding patio door to aft cockpit  
Patio door curtains with tie back  
Sofa seating  
Armchair  
Coffee table  
Scatter cushions  
LCD flatscreen television (42") on rise and fall  
DVD/CD/radio surround sound system with five speakers and sub woofer (Bose 28)  
iPod docking station connected to surround sound system  
Control head for flybridge CD/radio  
Air conditioning  
Side windows with blinds  
Drinks cabinet with glassware stowage for eight (8 x Champagne, 8 x whisky, 1 x decanter)  
Halogen overhead lighting 24v  
Double AC sockets  
Sensor connected to fire detection system  
Telephone point (aft starboard side)  
2 x table lamps

Dining table  
8 x free standing dining chairs  
Storage cupboards  
Fitted carpet  
Access forward to main helm position  
Door leading to galley  
Stairs leading to master stateroom and two guest cabins

#### Galley

American style fridge/freezer with icemaker  
4-ring ceramic hob AC  
Hob extractor AC  
Slimline dishwasher AC  
Stainless steel sink  
Hot and cold water  
Side window with blind  
Storage consisting of cupboards, drawers and top-box lockers  
Halogen overhead lighting 24v  
Lighting under top box lockers 24v  
Double AC sockets  
Sensor connected to fire detection system  
Air conditioning  
Door to saloon area  
Manual side opening door to port side deck  
Microwave/oven AC

#### Main Helm Console and Observation Area

2 x upholstered helm seats with electric operation  
Console with walnut effect fascia  
Hydraulic power steering  
Steering wheel  
Radar/chart plotter with GPS  
Autopilot  
Depth and speed displays  
VHF radio dual station  
Magnetic compass  
Horn control  
Switch panels  
Remote spotlight control  
Trim tab controls  
Rudder indicator  
Analogue engine instrumentation  
Fresh water gauge  
Fuel gauge  
Cigar lighter  
Main control and monitoring panel (AC/DC) with generators control  
Monitoring panel for fire detection system  
Windscreen wiper and washer controls  
Glass holder  
Screen demister  
Manual side opening door to starboard side deck  
Sofa seat on port side  
Air conditioning  
Halogen overhead lighting 24v  
Fitted carpet  
Double AC sockets (port side)  
2 x telephone points (port side)  
Staircase forward leading to VIP stateroom

#### Forward VIP Stateroom

Stairs leading from main helm area  
Double berth  
Foam mattress for berth  
Storage beneath berth  
Drawers in berth end  
Bedside lights 24v  
Dressing table  
Stool for dressing table  
Sofa  
Air conditioning  
LCD flatscreen television (42") on bulkhead  
DVD/CD player with two speakers

Halogen overhead lighting 24v  
Two fixed portholes on each side with blind  
Skylight with blind  
Double AC socket  
Fitted carpet  
Sensor connected to fire detection system  
2 x telephone points (port bedside and dressing table)  
Doors to en suite and walk-in wardrobe

#### Forward VIP Walk-in Wardrobe

Hanging rails  
Drawers  
Shelves  
Full-length mirror  
Halogen overhead lighting 24v  
AC socket  
Fitted carpet  
Door to stateroom

#### Forward VIP En Suite

Tecma toilet 24v  
Vanity top and flooring  
Large ceramic washbasin  
Taps and accessories (toothbrush and glass holder, soap dispenser, towel rails and towels)  
Separate shower compartment  
Acrylic folding shower door  
Air conditioning outlet  
Extractor fan  
Mirrored vanity unit  
Shelved cupboard  
Halogen overhead lighting 24v  
Opening porthole with mosquito screen and venetian blind  
Shaver socket 240/110v  
Door to stateroom

#### Lower Deck Lobby

Stairs leading down from main deck saloon area  
Halogen overhead lighting 24v  
AC socket  
Fitted carpet  
Large bilge access hatch  
Sensor connected to fire detection system  
Doors leading to lower deck guest accommodation (excluding forward VIP stateroom)

#### Midships Master Stateroom

Double berth  
Foam mattress for berth  
Storage beneath berth  
Drawers in berth end and sides  
Bedside units with storage  
Bedside lights 24v  
Dressing table  
Pouffe for dressing table  
Sofa  
Air conditioning  
Halogen overhead lighting 24v  
Table lamp  
Organic porthole arrangement with blind on each side (outer two portholes openable with mosquito screens)  
Double AC sockets  
2 x telephone points (dressing table and starboard bedside table)  
LCD flatscreen television (42") on bulkhead  
DVD/CD/radio surround system with two speakers and sub woofer (Bose 321)  
Fitted carpet  
Escape hatch on forward bulkhead  
Doors to en suite and walk-in wardrobe

#### Midships Master Walk-in Wardrobe

Hanging rails  
Drawers  
Shelves  
Full length mirror  
Halogen overhead lighting 24v  
AC socket  
Fitted carpet  
Door to stateroom

#### Midships Master En-Suite

Tecma toilet 24v  
Bidet  
Vanity top and flooring  
Large ceramic washbasin  
Taps and accessories (toothbrush and glass holder, soap dispenser, towel rails and towels)  
Separate shower compartment  
Acrylic folding shower door  
Extractor fan  
Air conditioning outlet  
Mirror  
Halogen overhead lighting 24v  
Opening porthole with mosquito screen and venetian blind  
Shaver socket 240/110v  
Door to stateroom

#### Aft Starboard Guest Cabin

Two single berths  
Pullman Bunk  
Foam mattresses for berths  
Under berth stowage  
2 x reading lights 24v  
Wardrobe  
Air conditioning  
Halogen overhead lighting 24v  
Organic porthole arrangement with blind (outer two portholes openable with mosquito screens)  
Double AC socket  
Sensor connected to fire detection system  
LCD flatscreen television (19")  
DVD/CD player with two speakers  
Telephone point  
Fitted carpet  
Doors to en suite and lobby

#### Aft Starboard En-Suite

Tecma toilet 24v  
Vanity top and flooring  
Washbasin  
Taps and accessories (toothbrush and glass holder, soap dispenser, towel rails and towels)  
Separate shower compartment  
Acrylic folding shower door  
Extractor fan  
Air conditioning outlet  
Vanity unit  
Shelved cupboard  
Halogen overhead lighting 24v  
Opening porthole with mosquito screen and venetian blind  
Shaver socket 240/110v  
Door to guest cabin

#### Aft Port Guest Cabin

Two single berths  
Pullman Bunk  
Foam mattresses for berths  
Under berth stowage  
2 x reading lights 24v  
Wardrobe

Air conditioning  
Halogen overhead lighting 24v  
Organic porthole arrangement with blind (outer two portholes openable with mosquito screens)  
Double AC socket  
Sensor connected to fire detection system  
LCD flatscreen television (19")  
DVD/CD player with two speakers  
Telephone point  
Fitted carpet  
Doors to en suite and lobby

#### Aft Port En-Suite

Tecma toilet 24v  
Vanity top and flooring  
Washbasin  
Taps and accessories (toothbrush and glass holder, soap dispenser, towel rails and towels)  
Separate shower compartment  
Acrylic folding shower door  
Extractor fan  
Air conditioning outlet  
Vanity unit  
Shelved cupboard  
Halogen overhead lighting 24v  
Opening porthole with mosquito screen and venetian blind  
Shaver socket 240/110v  
Door to guest cabin

#### Aft Crew Mess

Access door from stern  
Sink with tap  
Worktop with undercounter storage  
Air conditioning  
Small microwave  
Undercounter fridge  
AC sockets  
Washer/dryer AC  
Telephone point  
Sensor connected to fire detection system  
Halogen overhead lighting 24v  
Opening porthole with mosquito screen and venetian blind  
Seating area  
Table  
LCD flatscreen television (19")  
DVD/CD with two speakers  
Non slip safety flooring  
Doors to crew cabins and crew toilet/shower  
Watertight door to engine room

#### Crew Cabin

2 x Twin bunk berths  
Foam mattresses for berths  
Reading lights 24v  
Air conditioning  
Wardrobe  
Full length mirror on back of cabin door  
Halogen overhead lighting 24v  
Double AC socket  
Telephone point  
Sensor connected to fire detection system  
CD/radio with two speakers  
Fitted carpet  
Opening porthole with mosquito screen and curtains  
Door to crew mess

## General information

Make:	Sunseeker
Model:	88 Yacht
Year:	2011
Condition:	Used

## Engine

Engine:	CATERPILLAR C32 ACERT, 1902 hp
Engine type:	
Fuel type:	Diesel

## Measurements

Length:	26.87 m (88.16 ft)
Beam:	6.22 m (20.41 ft)
Deep:	3.3 m (10.83 ft)
Weight:	71300 ( )

## Accommodation

Cabins:	0
Berths:	0

# Images



Image courtesy of JD Yachts



Image courtesy of JD Yachts



Image courtesy of JD Yachts



Image courtesy of JD Yachts



Image courtesy of JD Yachts



Image courtesy of JD Yachts



Image courtesy of JD Yachts



Image courtesy of JD Yachts



Image courtesy of JD Yachts



Image courtesy of JD Yachts



Image courtesy of JD Yachts



Image courtesy of JD Yachts



Image courtesy of JD Yachts



Image courtesy of JD Yachts



Image courtesy of JD Yachts



Image courtesy of JD Yachts



Image courtesy of JD Yachts



Image courtesy of JD Yachts





Image courtesy of JD Yachts



Image courtesy of JD Yachts



Image courtesy of JD Yachts



Image courtesy of JD Yachts



Image courtesy of JD Yachts



Image courtesy of JD Yachts



Image courtesy of JD Yachts



Image courtesy of JD Yachts



Image courtesy of JD Yachts



Image courtesy of JD Yachts



Image courtesy of JD Yachts



Image courtesy of JD Yachts



Image courtesy of JD Yachts



Image courtesy of JD Yachts

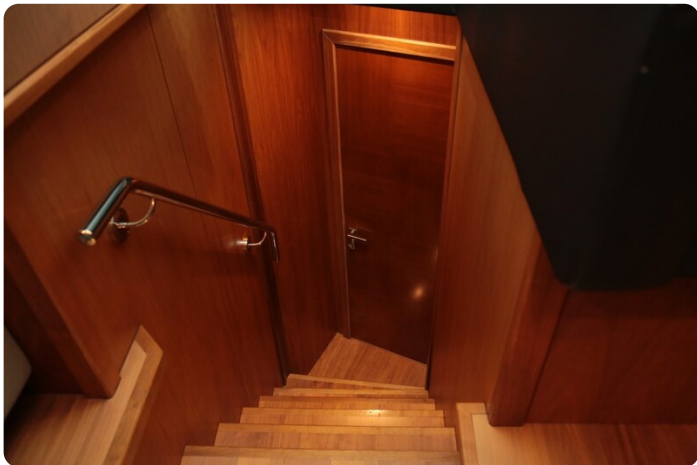


Image courtesy of JD Yachts

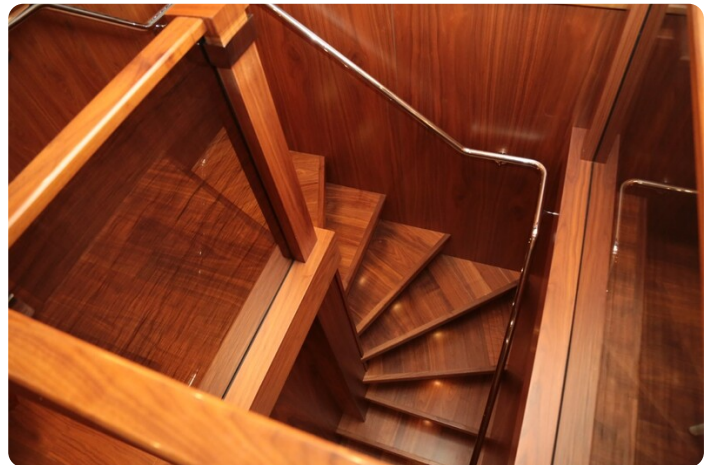


Image courtesy of JD Yachts



Image courtesy of JD Yachts



Image courtesy of JD Yachts



Image courtesy of JD Yachts



Image courtesy of JD Yachts



Image courtesy of JD Yachts



Image courtesy of JD Yachts



Image courtesy of JD Yachts



Image courtesy of JD Yachts



Image courtesy of JD Yachts



Image courtesy of JD Yachts



Image courtesy of JD Yachts



Image courtesy of JD Yachts



Image courtesy of JD Yachts



Image courtesy of JD Yachts



Image courtesy of JD Yachts



Image courtesy of JD Yachts



Image courtesy of JD Yachts



Image courtesy of JD Yachts



Image courtesy of JD Yachts



Image courtesy of JD Yachts



Image courtesy of JD Yachts



Image courtesy of JD Yachts



Image courtesy of JD Yachts



Image courtesy of JD Yachts



Image courtesy of JD Yachts



Image courtesy of JD Yachts



Image courtesy of JD Yachts



Image courtesy of JD Yachts



Image courtesy of JD Yachts



Image courtesy of JD Yachts



Image courtesy of JD Yachts



Image courtesy of JD Yachts





Image courtesy of JD Yachts



Image courtesy of JD Yachts



Image courtesy of JD Yachts



Image courtesy of JD Yachts



Image courtesy of JD Yachts

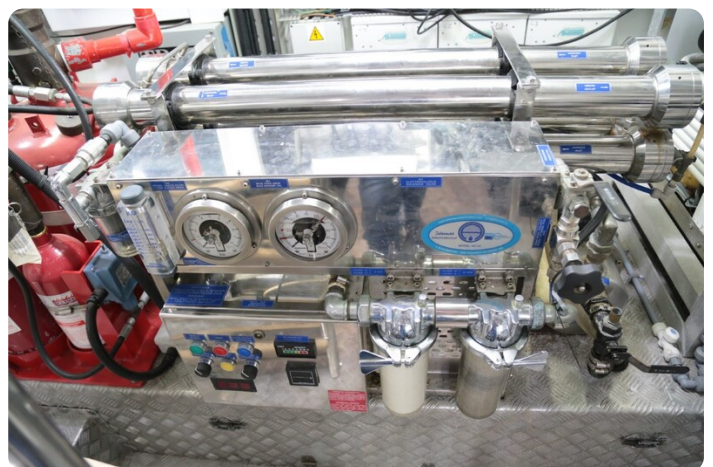


Image courtesy of JD Yachts



Image courtesy of JD Yachts



Image courtesy of JD Yachts



Image courtesy of JD Yachts



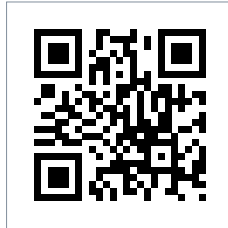
Image courtesy of JD Yachts

**JD YACHTS LIMITED**

80 THE ESPLANADE  
DT4 7AA WEYMOUTH  
United Kingdom (UK)

Phone: +44 (0) 1305 766504

<http://jdyachts.com>



 YACHTS.

The logo consists of a stylized 'JD' monogram in orange and white, followed by the word 'YACHTS.' in white, all set against a black square background.