

# Sealine S34

£72,995 • Brightlingsea Großbritannien • Benutzt • 2000

## Präsentiert von

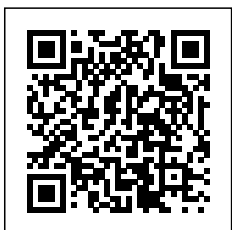
Peter Marchant  
Phone: 44(0)1206302003

**Morgan Marine**  
The Boatyard, Shipyard  
Estate  
CO7 0AR Colchester  
Großbritannien



## Details

Hersteller:	Sealine
Modell:	S34
Jahr:	2000
Bedingung:	Benutzt
Motor:	, 300 hp
Motortyp:	
Kraftstofftyp:	Dieselfkraftstoff
Länge:	10.46 m (34.32 ft)
Breite:	3.33 m (10.93 ft)
Kabine:	0
Liegeplätze:	0



Morgan Marine



7zea.com

# Beschreibung

EN

Sealine S34 built in 2000. Powered by twin Volvo Penta KAD 32P diesel inboard engines & Bow + Stern thrusters for ultimate manoeuvrability, this has to be one of the best kept examples of the ever-popular and spacious S34 cruiser. She has been exceptionally well cared for by her current owner and comes with an impressive paperwork history. "Becca" offers a beautifully finished interior, combining exquisite woodwork with a practical and well-thought-out design, making her both luxurious and functional. On the water, she cruises comfortably at 25 knots with a top speed of around 30 knots when fully loaded, delivering both performance and reliability. Last serviced April 2025 including engine & drives, anodes, antifouling and full cut and polish. This model is very well equipped, featuring stern and bow thrusters for effortless handling, electric windlass, Raymarine Hybrid chart plotter, Icom VHF radio, Garmin GPS Map 182c, diesel-powered heating and much more. A rare opportunity to acquire a highly spec'd and lovingly maintained Sealine S34. Early viewing is strongly advised.

Cabin: Forward double berth with roof hatch, deck windows + blinds + storage lockers and lighting. Aft cabin with 2x single berths with storage. High spec galley to port side with gas burner, sink, oven, fridge and storage cupboards. U-shaped saloon cushioned seating with table and TV. Carpet throughout. Toilet compartment with toilet (with holding tank), sink, shower, mirror and storage - Two doors to toilet compartment.

Cockpit: Wheelhouse with plexiglass sliding door to saloon area. Large glass windscreen with port and starboard windscreen wipers. Helm position with large bench seat, dash with full engine controls, electronics and compass. Starboard side U-shaped saloon seating with removable table. Port side sun lounge. Port side wet bar with sink and cockpit fridge.

Electronics: Raymarine Hybrid chart plotter. Icom VHF radio. Garmin GPS map 182c. Raytheon speed and depth gauge. Volvo Penta engine gauges ( fuel, voltage, oil, temperature, RPM, and trim). Demister. Horn. Navigation lights. Anchor light. Interior lights. UK plug sockets. Breaker panel with switches. Spotlight. TV aerial. Shore power.

Machinery: Twin Volvo Penta KAD 32P diesel inboard engines. Bow and stern thruster. Eberspacher diesel heating. Bilge pump. Fuel capacity - 564 litres. Water Capacity - 205 litres. Holding tank - Approx 100 litres.

## Allgemeine Information

Hersteller:	Sealine
Modell:	S34
Jahr:	2000
Bedingung:	Benutzt

## Motor

Motor:	, 300 hp
Motortyp:	
Kraftstofftyp:	Dieselmotoren

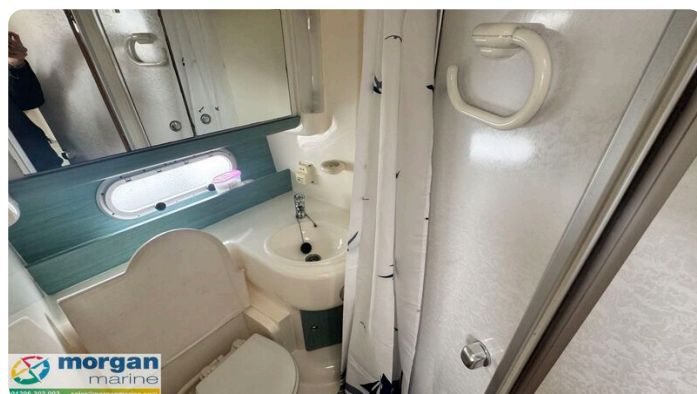
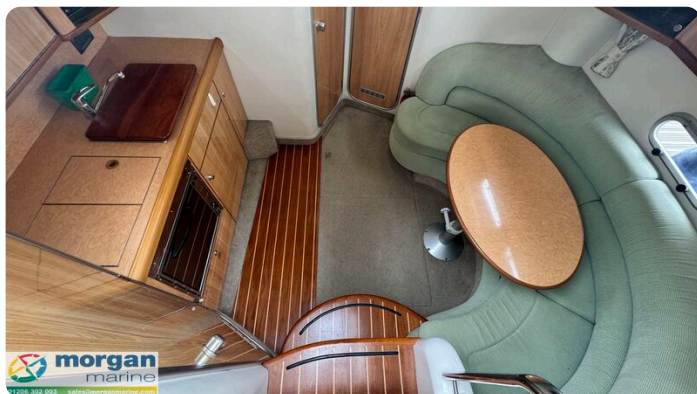
## Messungen

Länge:	10.46 m (34.32 ft)
Breite:	3.33 m (10.93 ft)
Tief:	0.94 m (3.08 ft)
Gewicht:	0 ()

## Unterkunft

Kabine:	0
Liegeplätze:	0













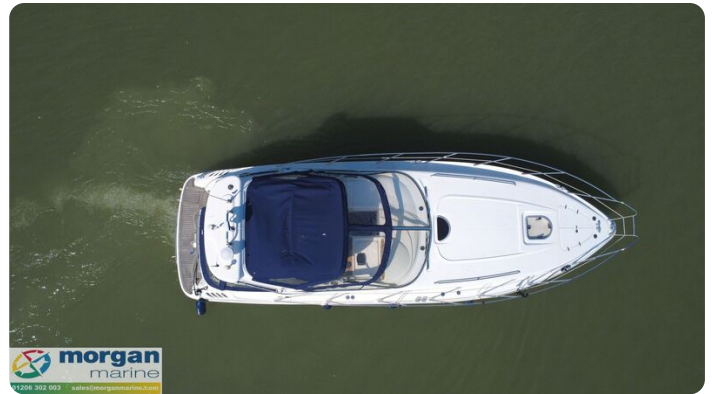


















**Morgan Marine**

The Boatyard, Shipyard Estate  
CO7 0AR Colchester  
Großbritannien

Telefon: 44(0)1206302003

<https://morganmarine.com>

