



# Rinaldi Sintesi 45

£39,995 • Brightlingsea United Kingdom (UK) • Used • 2007

## Presented by

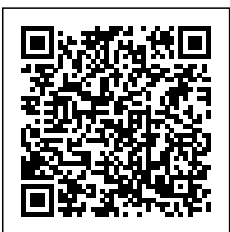
Peter Marchant  
Phone: 44(0)1206302003

**Morgan Marine**  
The Boatyard, Shipyard  
Estate  
CO7 0AR Colchester  
United Kingdom (UK)



## Details

Make:	Rinaldi
Model:	Sintesi 45
Year:	2007
Condition:	Used
Engine:	, 250 hp
Engine type:	
Length:	13.51 m (44.32 ft)
Beam:	3.48 m (11.42 ft)
Cabins:	0
Berths:	0



Morgan Marine



7zea.com

# Description

EN

Rinaldi Sintesi 45 Sailing Yacht just in at Morgan Marine! Joint collaboration of Italian designer (Santarelli) and the owner of the yard (Rinaldi). From 1992 they designed and built a fast offshore cruiser, with an especially elegant outline and racing characteristics. This sailing boat is both performance-oriented for the sailor who wants to participate in regattas, as well as cruising-oriented for the owner who wants a comfortable 45 footer for fast passage making. She is very sleek and deep draft at 2.48m has been happily cruised on the East Coast for last 4 years by its current owner and wife 2 handed, often making nice trips to Ramsgate, Lowestoft and the South Coast or cross channel. This boat has been much loved and cared for by her current owner and has got service history. Contact Morgan Marine today for more information and early viewing!!!

Deck: DK green / grey metallic wrapped topsides. Fin keel - First 40 keel fitted by Iron Brothers at an approx cost of £15k. Harken Jib furler. Twin luff foil - furler can be removed easily for racing if required. 2023 keel bulb modification to improve performance. 2023 New performance rudder Rud 37 Jebra and roller bearings. 2021 Mat out and repainted. New allspars rod rigging. New backstay and runners /check stays. New mast pulleys. 2021 relocated and improved traveller and mainsheet system. 2021 new mainsail stack pack cover. Cruising chute 95SQM with sock. Electric windlass with remote control, anchor, rope and chain. Recently antifouled hull. Mooring cleats. Fender and lines. Guard rails.  
Options to purchase at extra cost - Carbon sails (new in 2021) in good condition at an additional cost at approx £8k.

Cabin: Main forward double berth cabin ( 4 inch foam mattress) with opening roof hatch, storage and sealed front bunk head with access panel. Port side fore cabin with double berth. Starboard side fore cabin with double cabin. Hanging storage at port and starboard rear sides. Walls carpeted in cabins. Ceilings foam backed vinyl. Bathroom compartment with toilet (no holding tank), shower, sink with basin, and storage. Main saloon living area with either side bench style 4 inch foam white with blue stripes cushion seating. - Extra two single berths. Table with engine compartment underneath and storage. Galley area with sink, 2 burner gas stove, fridge (fitted 2021) and storage. Cold running water. Hot water pipework fitted (No heater/tank fitted.) Workbench area with storage and battery switch panel.

Cockpit: Cockpit area with port and starboard bench style seating area. Helm station with large wheel, and dash with engine controls. Sliding door hatch with steps down into saloon area.

Electronics: Raymarine ST4000 wheel pilot autopilot. Icom VHF IC-M411 VHF Marine radio. Raymarine C80 chart plotter. Raymarine ST60 wind, depth, log, speed tri data instrument. VHF radio. Bright LED lighting. Compass.

Machinery: Volvo Penta MD2030 3 cylinder inboard diesel with heat exchanger and sail drive 120SD 2.48 ratio with folding 2 blade prop. Good service history. Engine and fuel filters recently changed. Engine water pump over hauled 2023. New anodes. 2x Water tanks - Approx 370 Litres. Fuel capacity - 60 litres (1.2 -1.5 litres per hour).

## General information

Make:	Rinaldi
Model:	Sintesi 45
Year:	2007
Condition:	Used

## Engine

Engine:	, 250 hp
Engine type:	

## Measurements

Length:	13.51 m (44.32 ft)
Beam:	3.48 m (11.42 ft)
Deep:	2.48 m (8.14 ft)
Weight:	0 ( )

## Accommodation

Cabins:	0
Berths:	0

# Images



Rinaldi Sintesi 45 - on water



Rinaldi Sintesi 45 - hatch



Rinaldi Sintesi 45 - cockpit



Rinaldi Sintesi 45 - steering wheel



Rinaldi Sintesi 45 - compass



Rinaldi Sintesi 45 - work bench



Rinaldi Sintesi 45 - Plotter



Rinaldi Sintesi 45 - Switch panel



Rinaldi Sintesi 45 - VHF Radio



Rinaldi Sintesi 45 - Work area



Rinaldi Sintesi 45 - steps



Rinaldi Sintesi 45 - galley



Rinaldi Sintesi 45 - back berth 1



Rinaldi Sintesi 45 - saloon



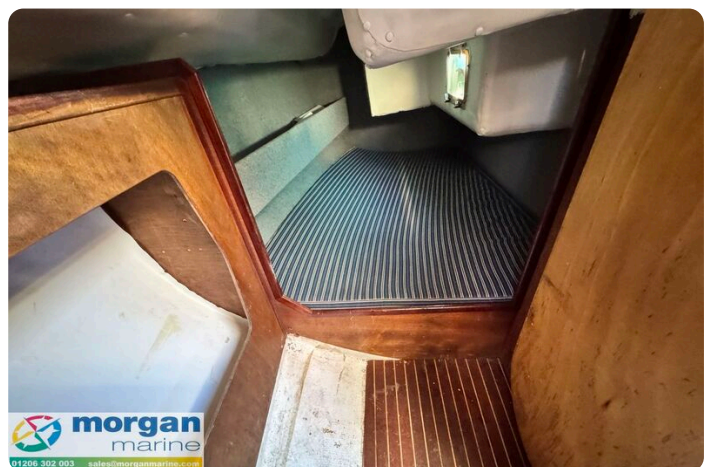
Rinaldi Sintesi 45 - bench seat



Rinaldi Sintesi 45 - seating



Rinaldi Sintesi 45 - table



Rinaldi Sintesi 45 - back berth 2



Rinaldi Sintesi 45 - engine



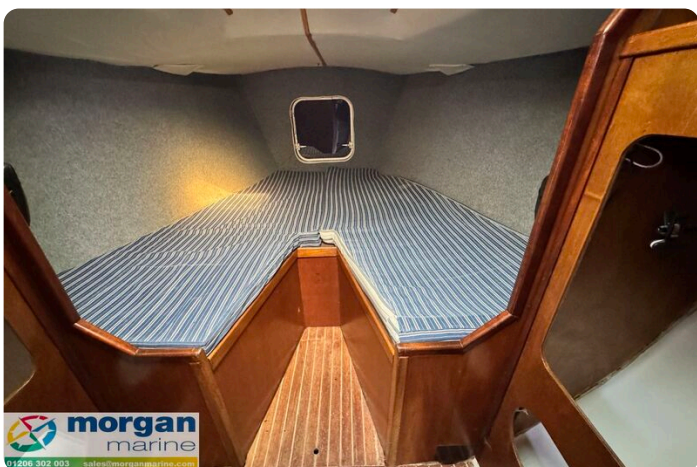
Rinaldi Sintesi 45 - engine



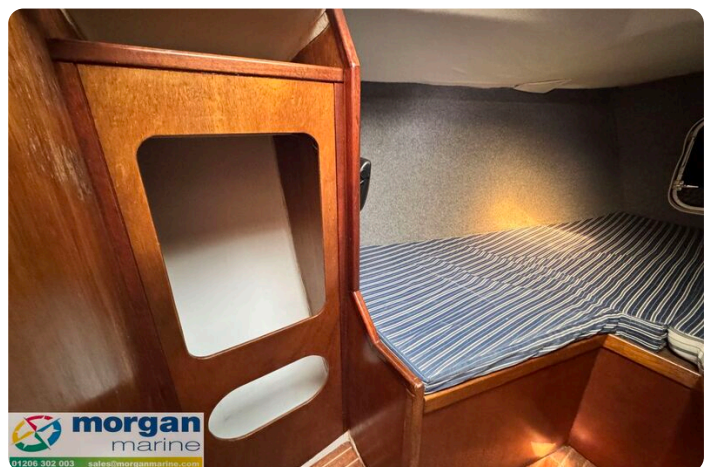
Rinaldi Sintesi 45 - Toilet



Rinaldi Sintesi 45 - sink



Rinaldi Sintesi 45 - V berth



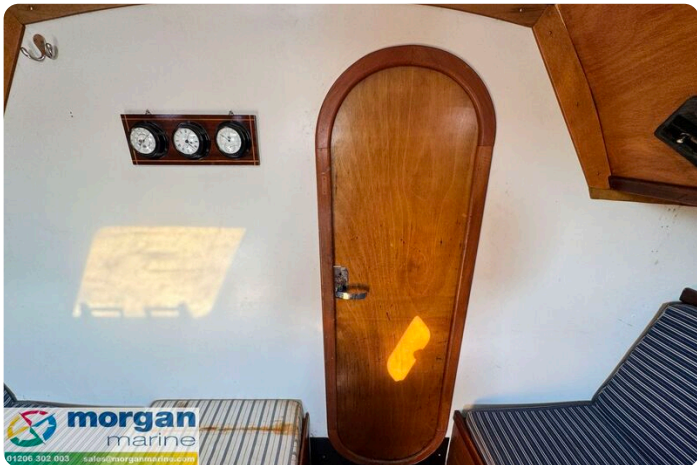
Rinaldi Sintesi 45 - Storage



Rinaldi Sintesi 45 - Hanging storage



Rinaldi Sintesi 45 - Doors



Rinaldi Sintesi 45 - door to cabin



Rinaldi Sintesi 45 - Clocks



Rinaldi Sintesi 45 - door



Rinaldi Sintesi 45 - deck area



Rinaldi Sintesi 45 - bow



Rinaldi Sintesi 45 - overview



Rinaldi Sintesi 45 - rope



Rinaldi Sintesi 45 - sail cover



Rinaldi Sintesi 45 -ropes



Rinaldi Sintesi 45 - bow





Rinaldi Sintesi 45 - mast



Rinaldi Sintesi 45 - wheel



Rinaldi Sintesi 45 - sailing



Rinaldi Sintesi 45 - sails



Rinaldi Sintesi 45 - prop



Rinaldi Sintesi 45 - sails



Rinaldi Sintesi 45 - sails up



Rinaldi Sintesi 45 - back



Rinaldi Sintesi 45 - front



Rinaldi Sintesi 45 - side view



Rinaldi Sintesi 45 - Side



Rinaldi Sintesi 45 - guard rails



Rinaldi Sintesi 45 - keel



Rinaldi Sintesi 45 - top view



Rinaldi Sintesi 45 - back

**Morgan Marine**

The Boatyard, Shipyard Estate  
CO7 0AR Colchester  
United Kingdom (UK)

Phone: 44(0)1206302003

<https://morganmarine.com>

