

# Ribquest 750

£39,995 • Essex Großbritannien • Benutzt • 2016

## Präsentiert von

Peter Marchant  
Phone: 44(0)1206302003

**Morgan Marine**  
The Boatyard, Shipyard  
Estate  
CO7 0AR Colchester  
Großbritannien

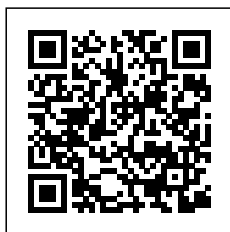


## Details

Hersteller:	Ribquest
Modell:	750
Jahr:	2016
Bedingung:	Benutzt
Motortyp:	
Kraftstofftyp:	Benzin
Länge:	7.5 m (24.61 ft)
Breite:	2.6 m (8.53 ft)
Kabine:	0
Liegeplätze:	0



Morgan Marine



7zea.com

# Beschreibung

EN

2016 Ribquest 750 is a fantastic, versatile RIB that's perfect for water sports, coastal cruising, or enjoyable days out on the water with family and friends. Powered by twin Honda BF135 outboards, the boat offers strong performance, reliability, and smooth handling, making it equally suited to towing water skiers or exploring the coastline at speed. Built with a solid GRP hull and durable Hypalon tubes, the boat is designed for stability, safety, and long-term durability. The seating layout is both practical and comfortable, featuring four jockey seats with supportive wing backrests and useful storage underneath, along with a three person rear bench seat with backrest that provides additional seating for passengers. This boat is well equipped with quality electronics including a Garmin GPSMap chart plotter for navigation, and Icom VHF radio for communication. A Fusion audio system with speakers is also fitted, providing great sound while out on the water. It also benefits from a Stainless Steel A-frame and a full boat cover to help protect it when not in use. This boat sits on an SBS R4/2600EL roller trailer, making launching and recovery straightforward. Overall, the boat is in good condition and is an excellent all-rounder, ideal for water skiing, days out with friends and family, or simply enjoying time on the water. Contact Morgan Marine today to arrange your viewing and see this fantastic boat for yourself.

Deck: GRP deep V hull 24 degree dead rise. Rubbing strake. Hypalon heavy duty tubes. Overall cover in LG. Stainless Steel A-frame. Stainless Steel boarding swim ladder with bathing platform attached to A-frame. Moulded grab handles. Rope lifelines. EVA decking. Stainless Steel bow eye. Raised bow step including anchor locker.

Cabin: N/A - Open boat

Cockpit: Console with windscreen, Stainless Steel rails, multi spoke soft grip steering wheel and engine controls. Forward console cushion seating with backrest and access hatch on gas struts. 2x Jockey seats with wing backrest and storage underneath. Attached to jockey seats, rear 2x bolster cushion seats with backrest. 3 Person rear bench seat with backrest and with storage underneath. Cup holders.

Electronics: Garmin GPSMap 820 XS chart plotter. Icom VHF radio. Fusion audio with speakers. Simrad IS35 digital gauge NMEA 2000. Honda gauges. Switch panel with circuit breakers. Battery marine isolators. Automatic and manual bilge pump. Navigation lights. Anchor light. 12V Socket. Scanstrut wireless phone charger.

Machinery: Twin Honda BF135 outboards with power trim and tilt. Fuel capacity - 210 litres. Engine lock.

Trailer: SBS R4/2600EL roller trailer with jockey wheel, winch and hitch. NB - the road trailer may not be in serviceable road worthy condition. It is recommended the buyer should inspect and service accordingly prior to use on public roads.

## Allgemeine Information

Hersteller:	Ribquest
Modell:	750
Jahr:	2016
Bedingung:	Benutzt

## Motor

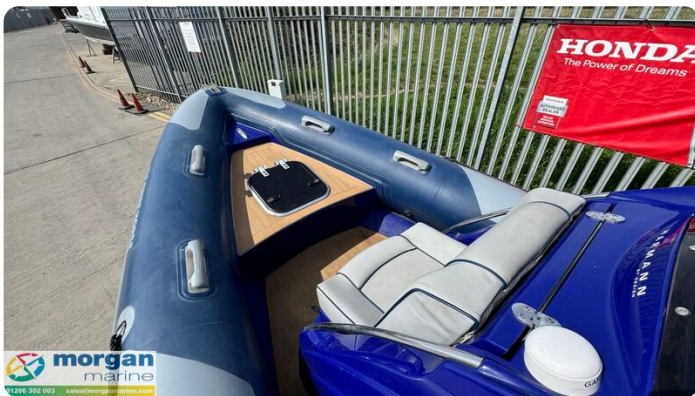
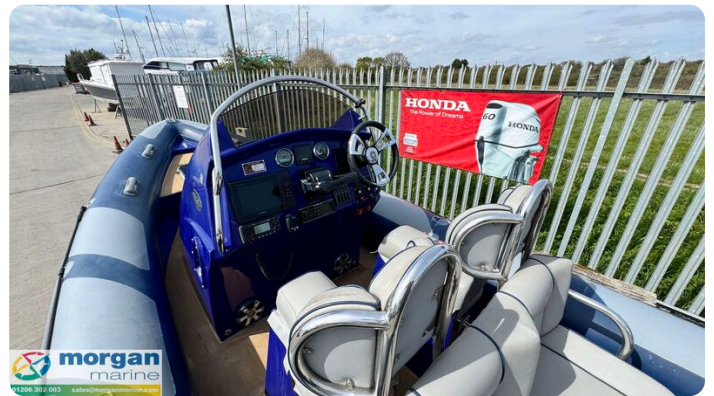
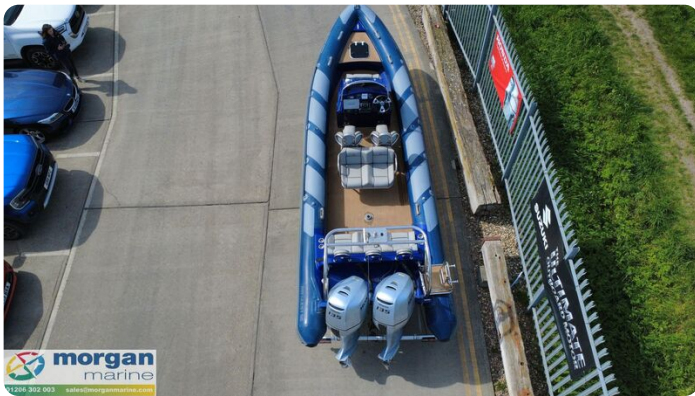
Motortyp:	
Kraftstofftyp:	Benzin

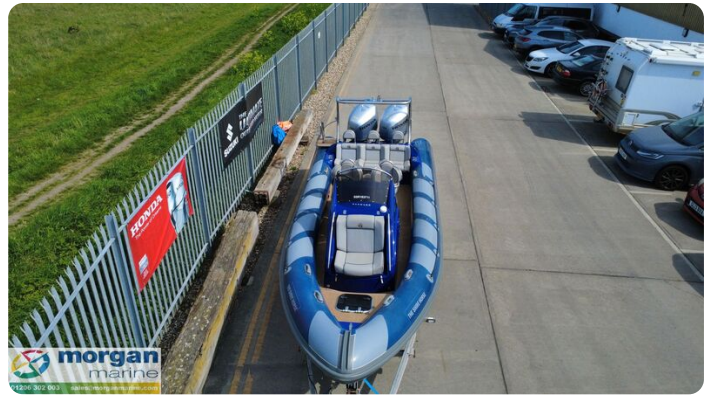
## Messungen

Länge:	7.5 m (24.61 ft)
Breite:	2.6 m (8.53 ft)
Tief:	1.08 m (3.54 ft)

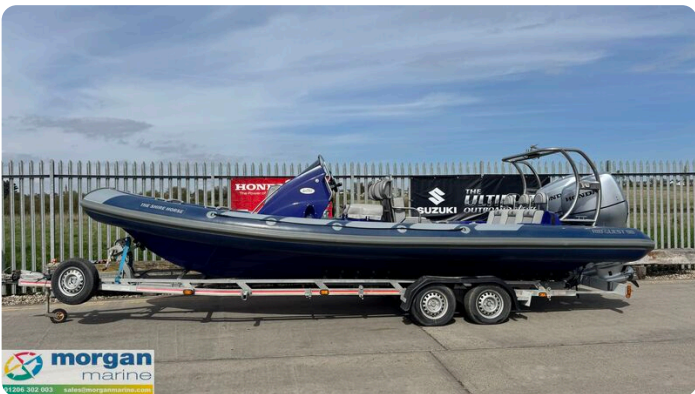
## Unterkunft

Kabine:	0
Liegeplätze:	0













**Morgan Marine**

The Boatyard, Shipyard Estate  
CO7 0AR Colchester  
Großbritannien

Telefon: 44(0)1206302003

<https://morganmarine.com>

