

Redfinn 22 Custom

£11,995 • Brightlingsea Großbritannien • Benutzt • 2009

Präsentiert von

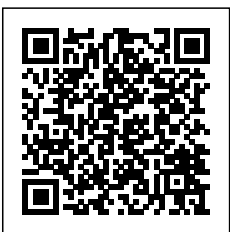
Peter Marchant
Phone: 44(0)1206302003

Morgan Marine
The Boatyard, Shipyard
Estate
CO7 0AR Colchester
Großbritannien

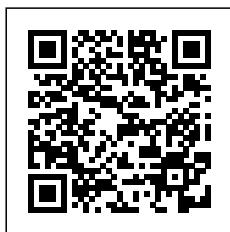


Details

Hersteller:	Redfinn
Modell:	22 Custom
Jahr:	2009
Bedingung:	Benutzt
Motor:	, 250 hp
Motortyp:	
Länge:	6.7 m (21.98 ft)
Breite:	2.43 m (7.97 ft)
Kabine:	0
Liegeplätze:	0



Morgan Marine



7zea.com

Beschreibung

EN

Originally built by Andrew Howard from Fibretek Boats in St Osyth, Essex in 2009, this Redfinn 22 powered by an 2015 Mariner 115hp four stroke engine purchased new in 2016 just in at Morgan Marine and used only for fishing in the Thames Estuary. This boat is the perfect fishing boat for days out on the water with family and friends, and is well quipped with electric windlass, Garmin plotters, VHF radio, gas burner, and roller coaster trailer! Contact Morgan Marine today for more information and early viewing!

Deck: Electric windlass with Bruce anchor, chain and rope. Recent replacement of cockpit deck in marine ply. Bathing platform. Deck rails. Fishing rod holders. Mooring cleats.

Cabin: Single berth with cushioned seating. 2x gas burner. Storage.

Cockpit: Windscreen with electric windscreen wiper. Wheelhouse with dash, steering wheel and engine controls.

Electronics: Garmin GPS map 551 plotter. Garmin Fish finder 400c plotter. VHF radio. 2 x 12v batteries. Deck light. Nav lights. Auto bilge pump. Fire extinguisher. Compass. Stereo with speakers.

Machinery: 2015 Mariner 115hp four stroke long shaft outboard engine with power trim and tilt. Engine hours approx 200.

2 Wheel roller coaster trailer with winch and spare wheel.

Allgemeine Information

Hersteller:	Redfinn
Modell:	22 Custom
Jahr:	2009
Bedingung:	Benutzt

Motor

Motor:	, 250 hp
Motortyp:	

Messungen

Länge:	6.7 m (21.98 ft)
Breite:	2.43 m (7.97 ft)
Tief:	0 m (0.00 ft)
Gewicht:	0 ()

Unterkunft

Kabine:	0
Liegeplätze:	0

Bilder



edfinn-22-custom-Fred-7-side



edfinn-22-custom-Fred-7-deck-2



edfinn-22-custom-Fred-7-deck



edfinn-22-custom-Fred-7-cabin



edfinn-22-custom-Fred-7-cabin-2



edfinn-22-custom-Fred-7-seating



edfinn-22-custom-Fred-7-cooker



edfinn-22-custom-Fred-7-rod-holder



edfinn-22-custom-Fred-7-door



edfinn-22-custom-Fred-7-back-deck



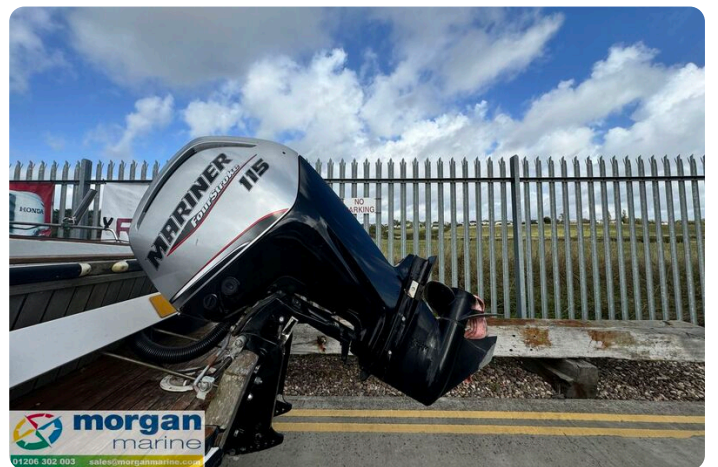
edfinn-22-custom-Fred-7-back



edfinn-22-custom-Fred-7-bow



edfinn-22-custom-Fred-7-Main



edfinn-22-custom-Fred-7-engine



edfinn-22-custom-Fred-7-engine



edfinn-22-custom-Fred-7-back-deck



edfinn-22-custom-Fred-7-bathing-platform



edfinn-22-custom-Fred-7-anchor



edfinn-22-custom-Fred-7-hatch





edfinn-22-custom-Fred-7-pilot-seat



edfinn-22-custom-Fred-7-plotter



edfinn-22-custom-Fred-7-bilge-pump



edfinn-22-custom-Fred-7-wheel



edfinn-22-custom-Fred-7-plot

Morgan Marine

The Boatyard, Shipyard Estate
CO7 0AR Colchester
Großbritannien

Telefon: 44(0)1206302003

<https://morganmarine.com>

