



Princess V52

€579,000 • Gryts Varv Sweden • Used • 2012

Presented by

Justin Garwell
Phone: +44 (0) 1305 766504

JD YACHTS LIMITED
80 THE ESPLANADE
DT4 7AA WEYMOUTH
United Kingdom (UK)



Details

Make:	Princess
Model:	V52
Year:	2012
Condition:	Used
Engine:	Volvo D11-670, 670 hp
Engine type:	
Fuel type:	Diesel
Length:	16.4 m (53.81 ft)
Beam:	4.22 m (13.85 ft)
Cabins:	0
Berths:	0



JD YACHTS
LIMITED



7zea.com

Description

ENG 2012. 2 x 670 HP Volvo D11-670 6 berths in 3 cabins Lying: Gryts Varv Sweden	panel Circuit breakers on all circuits 220/240 Volt: 7kW diesel generator with own starting battery and specially silenced exhaust Shore support inlet Generator/shore support change over switch Power points in owner's cabin, forward guest cabin, galley (double) and saloon Polarity check system Earth leakage safety trip Shaver points in both bathrooms
ENG Extras	En-suite Bathroom
Air Conditioning Eberspacher Heating Throughout Yacht Controller SidePower Bow Thruster SidePower Stern Thruster Hi-Lo Hydraulic Bathing Platform Onan Generator 7KW Glomex Webboat WiFi AIS BOSE Sound System to Saloon Heated Towel Rails to both Heads Teak Laid Bathing Platform Teak Laid Cockpit Windlass to Bow & Stern Pilot & Co-Pilot Seats Re-Upholstered (2020) Cockpit Seating Re-Upholstered in Nirox (2020) Cockpit Sofa Re-Upholstered (2020)	Avonite worktop Wash basin with Monobloc mixer tap Separate shower cubicle Mirror Storage locker
Standard Specification	Forward Guest Cabin
Water System	Scissors berths (double/single conversion) Wardrobe Deck hatch and fixed skylights with integrated fly screen and blind Storage lockers Downlighters and individual berth lights forward
Water capacity totalling 80 gallons/96 US gallons/364 litres including 11 gallon/13 US gallon/50 litre hot water calorifier Water heated by engine and 240v immersion heater Automatic water pump with filter Main circuit breaker at switch panel Water level gauge Deck filler	En-suite Bathroom
Fuel System	Wash basin with Monobloc mixer tap Separate shower cubicle Mirror Storage locker
Twin fuel tanks (in NS8 marine grade alloy) with interconnection system giving 440 gallons/528 US gallons/ 2000 litres capacity Fuel fillers on both side decks High-capacity fuel filter/water trap Remote fuel cocks in cockpit locker Fuel gauges on helm console	Accommodation
Power And Drive Systems	All cabins feature opening portholes and 240v power points All bathrooms feature electric quietflush toilets and 240v shaver points
Twin conventional engine installation driven through V drive gearboxes Engine room lighting Power-assisted steering Trim tabs with indicators and auto tab function Electronic engine controls Engine room extractor fans with electronic time delay Dripless shaft seals	Owner's Stateroom
Electrical Systems	Large double bed with drawers below Wardrobe with shelves Drawers and storage lockers Overhead and individual berth lights Sofa Fixed and opening portlight
24 Volt: 4 x heavy-duty batteries for engine starting 4 x heavy-duty auxiliary batteries Engine alternators charge via split charge relays to isolate engine start batteries from auxiliaries 80-amp 24v float battery charger Battery paralleling system (for engine start back-up) Remote battery master switches with control switch at main	Upper Saloon
	U-shaped sofa Dining table Cocktail cabinet Overhead downlighters Electric opening roof Triple stainless-steel framed sliding doors to cockpit Opening window (port) Radio/CD with saloon and cockpit speakers Timber flooring
	Galley
	Avonite (or similar) worktop 3 ring ceramic hob Single stainless-steel sink with Monobloc mixer tap Combination microwave/conventional oven with grill Refrigerator with freezer compartment

Storage cupboards, drawers and lockers
Timber-laid flooring

Helm Position

Twin helm seats with sit/stand facility
Full engine instrumentation
Fuel gauges
Single-lever engine controls
Rudder position indicator
Power-assisted steering system with auto tab control and adjustable steering wheel
Remote control anchor winch
Trim tab controls with indicators
Autopilot
VHF with DSC R/T
Speed and distance log
Echo sounder with alarm
Remote control searchlight
High speed compass
Horn button
Chart table
Twin windscreen wipers
Windscreen freshwater pressure wash
Bilge pump controls with visual 'pump running' indicator (3)

Cockpit

Self-draining
U-shaped seating/dining area (converts to sunbed)
Folding teak table
Overhead and low level courtesy lights
Tonneau cover
Stainless-steel grabrails
Cockpit wetbar with sink, top loading coolbox, storage
Transom hatch to stern lazarette
Access hatch to engine room
220/240v shore support inlet in locker
Life raft locker
Electro-hydraulic raise/lower transom platform with integrated swimming ladder
Transom door
Hot and cold shower

Deck Fittings

Reversible electric anchor winch with foredeck and helm position controls
Self-stowing 20kg/44lb Delta anchor with 40m chain
Stemhead roller with automatic anchor launch and retrieve
Stainless-steel bow, stern and spring cleats
Stainless-steel pulpit and guardrails
Stainless-steel coachroof handrails
Foredeck hatch with integrated skylight
Stainless-steel rubbing band with rubber insert
Full set of IMCO navigation lights
Riding light
Remote control searchlight
Twin electric horns
Fuel and water fillers

3rd Cabin Layout

Two single berths
Wardrobe with shelf
Drawers
Storage lockers
Downlighters and individual berth lights

Standard Equipment

Power-assisted steering system
Bow thruster (120 kgf/265 lbf)
24v DC/240v AC electrical system
220v/240v generator (7Kw)
240v shore power with 80-amp float battery charger

Remote control electric anchor winch
Electro-hydraulic trim tabs
Autopilot
VHF with DSC R/T
Speed and distance log
Echo sounder with alarm
Remote control searchlight
Combination microwave/conventional oven/grill
Refrigerator with deep freeze compartment
Cockpit wetbar including sink and top loading coolbox
Electric quietflush toilets
Saloon LED TV/DVD/Radio/CD
Teak-laid transom platform/cockpit deck/stairs to side decks
Cockpit seating/dining area with sunbed conversion
Electrically operated sliding sunroof
Electro-hydraulic raise/lower transom platform
Transom door
Hot and cold transom shower
Cockpit cover

Fire Extinguishers

Automatic fire extinguisher in engine room and generator space

Bilge Pumps

Automatic electric bilge pumps with manual override (3 switches) in: engine room, forward accommodation and aft lazarette (3 in all)
High-capacity manual bilge pump with valve system and suction points in engine room and accommodation space

General information

Make:	Princess
Model:	V52
Year:	2012
Condition:	Used

Engine

Engine:	Volvo D11-670, 670 hp
Engine type:	
Fuel type:	Diesel

Measurements

Length:	16.4 m (53.81 ft)
Beam:	4.22 m (13.85 ft)
Deep:	1.09 m (3.58 ft)
Weight:	21000 ()

Accommodation

Cabins:	0
Berths:	0

Images



Image courtesy of JD Yachts



Image courtesy of JD Yachts



Image courtesy of JD Yachts



Image courtesy of JD Yachts



Image courtesy of JD Yachts



Image courtesy of JD Yachts



Image courtesy of JD Yachts



Image courtesy of JD Yachts



Image courtesy of JD Yachts



Image courtesy of JD Yachts



Image courtesy of JD Yachts



Image courtesy of JD Yachts



Image courtesy of JD Yachts



Image courtesy of JD Yachts



Image courtesy of JD Yachts



Image courtesy of JD Yachts



Image courtesy of JD Yachts



Image courtesy of JD Yachts



Image courtesy of JD Yachts



Image courtesy of JD Yachts



Image courtesy of JD Yachts



Image courtesy of JD Yachts



Image courtesy of JD Yachts



Image courtesy of JD Yachts



Image courtesy of JD Yachts



Image courtesy of JD Yachts



Image courtesy of JD Yachts



Image courtesy of JD Yachts



Image courtesy of JD Yachts



Image courtesy of JD Yachts



Image courtesy of JD Yachts



Image courtesy of JD Yachts

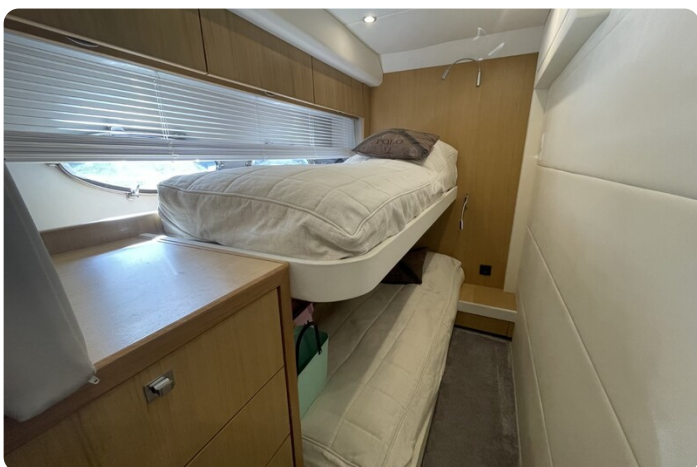


Image courtesy of JD Yachts



Image courtesy of JD Yachts



Image courtesy of JD Yachts



Image courtesy of JD Yachts



Image courtesy of JD Yachts



Image courtesy of JD Yachts



Image courtesy of JD Yachts



Image courtesy of JD Yachts

JD YACHTS LIMITED

80 THE ESPLANADE

DT4 7AA WEYMOUTH

United Kingdom (UK)

Phone: +44 (0) 1305 766504

<http://jdyachts.com>



 YACHTS.