



Pershing 65 Limited

€520,000 • Aveiro Portugal • Benutzt • 2000

Präsentiert von

Justin Garwell
Phone: +44 (0) 1305 766504

JD YACHTS LIMITED
80 THE ESPLANADE
DT4 7AA WEYMOUTH
Großbritannien

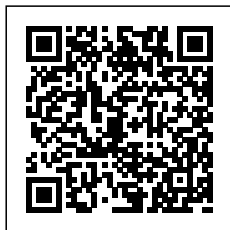


Details

Hersteller:	Pershing
Modell:	65 Limited
Jahr:	2000
Bedingung:	Benutzt
Motor:	Caterpillar 3142E with Arneson Drives, 1420 hp
Motortyp:	
Kraftstofftyp:	Diesekraftstoff
Länge:	19.7 m (64.63 ft)
Breite:	4.7 m (15.42 ft)
Kabine:	0
Liegeplätze:	0



JD YACHTS
LIMITED



7zea.com

Beschreibung

ENG

2000. 2 x 1420 HP Caterpillar 3142E with Arneson Drives

7 berths in 3 cabins plus crew

Lying: Aveiro Portugal

Owners Comments:

NEW Epoxy Primer & Antifoul

NEW Anodes & Engine Check

She has just be cleaned (including teak) and polished, ready for her new owners

ENG

Extras

Refit by Neptune Yacht Refit Services

Condaria Reverse Cycle Air Conditioning

2 x Air Conditioning Units to Cockpit

Bow Thruster with Remote Control

Stern Thruster with Remote Control

20 KVH KOHLER Generator

Besenzoni Hydraulic Passarelle

Besenzoni Hydraulic Crane, 400kg

Teak Laid Cockpit

Teak Laid Bathing Platform

NEW LED Lights to Cockpit

NEW LED Lighting to Name on the Stern

Garmin GPSmap KSV Chartplotter

NEW VHF Radio

NEW Safety Equipment

Fully Fitted Crew Cabin

TV's to all cabins

Radio/CD's to all cabins

4 Ring Hob to Galley

Standard Specification

Helm Area and Electronics

Navicontrol AP 303 gold Autopilot

Furuno radar

Engine alarms (CAT panels)

TV antenna

High speed compass

Remote fuel shut off

Remote air vent shut off E.R.

Engine fire extinguisher remote control

Electronic "trolling valve" control

Electronic engine Acc./Rev. lever control with synchronism

External fiberglass dashboard with hydraulic opening

instrument compartment

External fiberglass dashboard on co-pilot side with compartment

Bow thruster controls

CAT engine displays

Pershing steering wheel

Controls for trim tabs and Arneson Drives

(2) Flap indicators

(2) Trim indicators

Rudder angle

Controls for lighting, bilge pumps, windlass

Quicksilver engine throttles

Double helm seat

Canvas sunroof overhead

Cockpit

Fore and aft sunbathing cushions

U-shaped seating to port

Teak flooring

Fiberglass extendable table with pedestal

Outdoor kitchen and wet-bar to starboard

Fiberglass refrigerator outside cockpit, 32 gals.

Fiberglass sink with fresh water faucet

External sofa in helm area w/ smooth Ivory vinyl seat cushions and backrest

2-Burner stove in cockpit

Ice maker

Fridge

(12) Side and central hard top chrome ceiling lights

(2) Stern swim platform lights

Trash bin

Sliding stern door, glass and stainless steel

Sliding fiberglass door with lock

Engine compartment inspection shutter

Lower Saloon

C-shaped leather sofa to port and galley to starboard

Leather wrapped ottomans with storage

(12) Ceiling lights with metal housings

Cherry inlay ceiling accents

(4) Stainless steel portholes

Digitally-controlled A/C system

Vinyl fabric wall coverings

Polished cherry wood work and cabinetry

Natural teak steps from top deck

Cross-paneled ceiling covered with Magilite style fabric

Accent lights

Carpeted flooring

Glass hi/lo coffee table

Galley

Concealed under cherry countertops to starboard

Refrigerator

Wood floors

Freezer

Polished cherry cabinetry

Exhaust fan

Drawers with cutouts for cutlery

Microwave oven

Stainless steel sink basin with folding tap

Galley unit in polished Cherry

(4) Burner electric ceramic cooktop

Master Stateroom

King size centerline berth

Digitally-controlled A/C system

Vinyl fabric wall coverings

Polished cherry wood work and cabinetry

Ceiling lights with metal housings

Cherry inlay ceiling accents

Carpeting

Hanging locker with clothes rod, internal light, drawers & shelves

Nightstands with polished Cherry

Sharp flatscreen TV

Digitally-controlled A/C system

(2) Reading lamps

Chest of drawers in polished Cherry

(3) Stainless steel portholes

Mirrored headboard

Fridge

Master Head

Towel rack

Shower with Plexiglass door and stainless steel hardware
Teak shower grating
Ivory fiberglass shower column
(4) Lights
Shower faucet
Basin faucet
Washbasin of Ivory fiberglass with lacquered cabinet door
Stainless steel porthole
Ivory fiberglass flooring
Hanging locker with polished Cherry doors
Towel rack
Mirror
Sink top of natural Travertine marble
Electric freshwater toilet

VIP Stateroom

Polished Cherry cabinetry
Center-lined double berth
Closet with clothes rod & internal light
Berth border covered with vinyl fabric
Nightstands with polished Cherry surface
Mirrored headboard
Digitally-controlled A/C system
Double bed mattress
(2) Reading lights
(2) Stainless steel portholes
Sliding cover for hatchway
Digitally-controlled A/C system
Vinyl fabric wall coverings
Polished cherry wood work and cabinetry
Ceiling lights with metal housings
Carpeting

Guest Stateroom

Polished Cherry locker door with inside mirror
Nightstand with polished Cherry surface and border
Digitally-controlled A/C system
Vinyl fabric wall coverings
Polished cherry wood work and cabinetry
Ceiling lights with metal housings
Carpeting
(2) Single berths
(1) Pullman berth
(2) Reading lamps
(2) Mattresses
(2) Stainless steel portholes
Cross-paneled ceiling covered with vinyl
Sharp flatscreen TV
Vinyl upholstered headboard
Hanging locker in bulkhead with polished Cherry doors

VIP/Guest Head

Towel rack
Shower with Plexiglass door and stainless steel hardware
Teak shower grating
Ivory fiberglass shower column
(4) Lights
Shower faucet
Washbasin faucet
Washbasin of Ivory fiberglass with lacquered cabinet door
Stainless steel porthole
Ivory fiberglass flooring
Hanging locker with polished Cherry doors
Towel rack
Mirror
Sink top of natural Travertine marble
Electric freshwater toilet

Crew Quarters

Crew cabin with head forward through exterior hatch on bow
Single bead
Sink

Toilet
Head

Hull & Deck Equipment

Anchor Bruce 66 lbs. with lock
Stainless steel railing
Stainless steel anchor hawser
(4) Stainless steel mooring cleats
Rub-rail with stainless steel insert rubbing strake
Galvanized anchor chain
Sportlight
Huge locker under stern sun pad
Hydraulic davit
Hydraulic bathing ladder
Sliding canvas top
Navigation lights
Telescopic extensible hideaway hydraulic gangway with remote control
Teak swim platform and steps
Hydraulic retractable swim ladder
Fiberglass superstructure with layered glass windscreen
Stainless steel black water extraction cap
Stainless steel fresh water filling cap
(2) Stainless steel fuel filling caps
(2) Stainless steel aft platform grab rods
Tender Garage
2000W dual command windlass
(2) Hideaway side mooring cleats
Stainless railing on the aft spoiler

Engine Room

(2) 24V Multi-function hydraulic control stations
A/C compressor
Automatic powder fire suppression system
(4) Seawater basket filters
(2) Fuel separator filters
19 kW Kohler 60Hz power generator with soundproof housing
Thermal insulation/soundproofing
Fuel level check
Plank ribbing in fiberglass
Waterproof bulkhead
(4) Ceiling light fixtures
Manual pump fuel drainage/loading
Dynamic air intakes on the bulkheads with remote control closure
Light alloy and teak step ladder
Stainless steel engine exhaust raiser
Structural fuel tank, fiberglass and light alloy
Fiberglass engine exhaust mufflers
Bilge pump engine suction by-pass valves
Generator manifold and exhaust fume separator
Dewalt compressor
Glendinning shore power bucket
8 gals. water heater (230V)
Electric bilge pump with manifold
(2) Electric bilge pumps
Structural fresh water tank, fiberglass and light alloy
Fiberglass gray water tank (34 gals.)
Stainless steel black water tank (68 gals.)
Hydraulic flap system
Bronze water inlets and outlets
ZF transmissions

Electrical System

(2) Engine starting batteries, 260A 24V
Generator starting battery, 100 A 12V
(2) Bow thrusters 160A 24V
(2) Engine service batteries, 260A 24V
Electric engine room extractors
Mass insulation with copper plait
Parallel on batteries
Battery charger partition
110V GFI Sockets (1 per room)

Engine connection panel
Accessory control panel with cut-out switches
Power supply panel in engine room
Galvanic protection with zinc
Battery cut-off
Voltage measuring instruments, 24V/230V
Battery charger, Mastervolt, 24V 15A
Battery charger, Mastervolt, 24V 75A
Battery charger, Mastervolt, 12V 10A

Allgemeine Information

Hersteller:	Pershing
Modell:	65 Limited
Jahr:	2000
Bedingung:	Benutzt

Motor

Motor:	Caterpillar 3142E with Arneson Drives, 1420 hp
Motortyp:	
Kraftstofftyp:	Diesekraftstoff

Messungen

Länge:	19.7 m (64.63 ft)
Breite:	4.7 m (15.42 ft)
Tief:	1.4 m (4.59 ft)
Gewicht:	28974 ()

Unterkunft

Kabine:	0
Liegeplätze:	0

Bilder



Image courtesy of JD Yachts



Image courtesy of JD Yachts



Image courtesy of JD Yachts



Image courtesy of JD Yachts



Image courtesy of JD Yachts



Image courtesy of JD Yachts



Image courtesy of JD Yachts



Image courtesy of JD Yachts



Image courtesy of JD Yachts



Image courtesy of JD Yachts



Image courtesy of JD Yachts



Image courtesy of JD Yachts



Image courtesy of JD Yachts



Image courtesy of JD Yachts



Image courtesy of JD Yachts



Image courtesy of JD Yachts



Image courtesy of JD Yachts



Image courtesy of JD Yachts



Image courtesy of JD Yachts



Image courtesy of JD Yachts



Image courtesy of JD Yachts



Image courtesy of JD Yachts



Image courtesy of JD Yachts



Image courtesy of JD Yachts



Image courtesy of JD Yachts



Image courtesy of JD Yachts



Image courtesy of JD Yachts



Image courtesy of JD Yachts



Image courtesy of JD Yachts



Image courtesy of JD Yachts

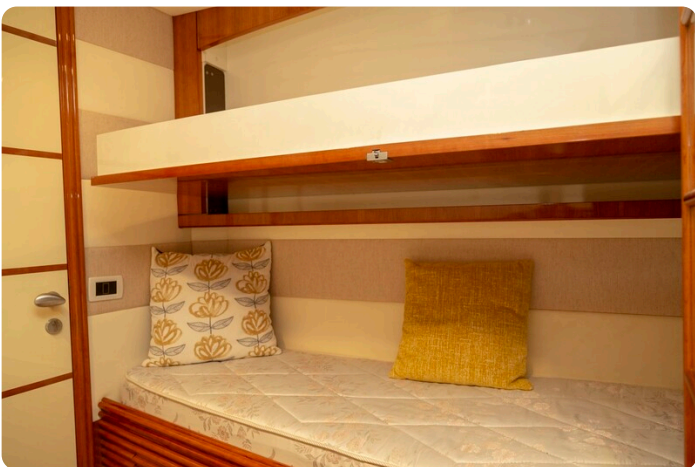


Image courtesy of JD Yachts



Image courtesy of JD Yachts

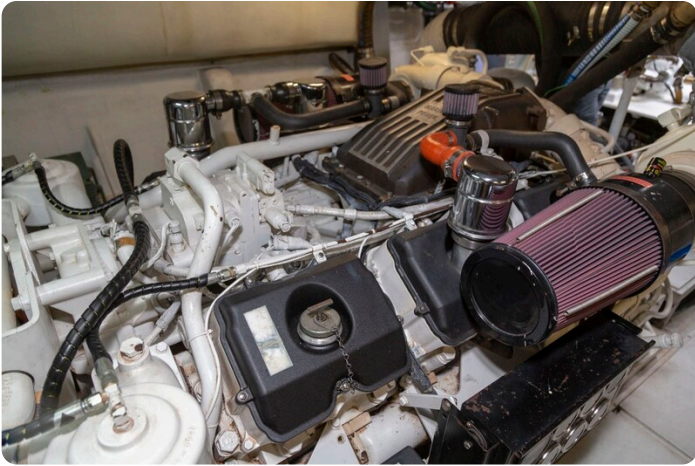


Image courtesy of JD Yachts



Image courtesy of JD Yachts



Image courtesy of JD Yachts



Image courtesy of JD Yachts



Image courtesy of JD Yachts



Image courtesy of JD Yachts



Image courtesy of JD Yachts



Image courtesy of JD Yachts

JD YACHTS LIMITED

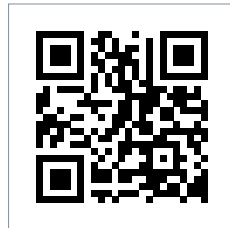
80 THE ESPLANADE

DT4 7AA WEYMOUTH

Großbritannien

Telefon: +44 (0) 1305 766504

<http://jdyachts.com>



 YACHTS.

The logo consists of a stylized 'JD' monogram in orange and white, followed by the word 'YACHTS.' in white, all set against a solid black rectangular background.