



# Nimbus Commuter 9

US\$376,721 • Sarasota Vereinigte Staaten von Amerika • Neu • 2026

## Präsentiert von



West  
Phone: 1-941-355-5500

**Nautical Ventures**  
50 SOUTH BRYAN RD.  
FL 33004 DANIA BEACH  
Vereinigte Staaten von  
Amerika

## Details

Hersteller:	Nimbus
Modell:	Commuter 9
Jahr:	2026
Bedingung:	Neu
Motortyp:	
Länge:	30 ft (9.14 m)
Breite:	9 ft (2.74 m)



Nautical  
Ventures



7zea.com

# Beschreibung

**Available in Store: Tampa - HIN: NIBY0184J526**

## Nimbus Commuter 9

### Mercury 350hp

The C9 is the third in the nine-meter Nimbus series following the latest W9 and T9 models. The C9 is a purpose-built, rapid commuter vessel, constructed to equally meet the needs of year-round commuters, active day-trippers, or those planning longer, staged journeys with overnight stays.

The Nimbus C9 is a boat for connoisseurs of contemporary Scandinavian design; those who appreciate well-thought-out solutions and smart functionality. The spacious cockpit offers splendid natural light, with a large, sliding glass roof hatch and a modern, snug helm position. The swiveling cockpit chairs provide ample space for four people to dine or space for five people in total. The cockpit passenger sofa converts easily into an extra bed for two children or one adult. The forward cabin has room for a double berth with separate head and kitchenette.

In place of the glass roof (fitted as standard), the boat can be equipped with an electronically opening canvas canopy, ideal for those wishing to optimize the open-air feeling on warm summer days. The driver's position has space for two people and can be equipped with single 9", 12", or twin 12" chart plotters. The foredeck features a large loading hatch with access to the cabin as well as an optional daybed which creates an extra seating area that seats 4 people with either a table or extended sunbed. The aft deck houses a wide sofa with ample stowage.

**\*Please note, stock images are included. Some features depicted may not be included.**

### Engine 1

- Mercury
- 350 XLCF
- 350.00 HP
- 261.00 KW

### Standard Features

- Completely air lubricated stepped hull design, built for exceptional sea worthiness and handling
- Minimal planning threshold razor sharp bow section
- Speed characteristics +40 knots, cruising speed 20-35 knots
- Walk-around deck layout
- Extra-large sliding doors with passages through which two people can pass in comfort
- Large sliding glass roof hatch, or electronically opening canvas canopy
- Cockpit passenger sofa that can be converted to an extra bed

### Selected Options

- Nimbus C9 X-Edition
- Roof Glass Hatch, manual
- Cabin cushions, w/ galley, x-Edition - Dark Grey
- Salong cushions, X-Edition, Graphite - Dark Grey

- Sunseat - foredeck and aft deck, X-Edition - Dark Grey
- Foredeck railing cushions, X-Edition - Dark Grey
- Aft side storage cushions - PS & SB, X-Edition
- Galley, cold water, no cooktop
- Nimbus pillow set, sunbrella tow
- Carpets, w/ Galley
- HiFi Package, High-end
- Search Light on stainless steel mast w/ joystick
- Zipwake dynamic trim control system
- Extra portlights in cabin
- Hot water system, Isotherm 15L
- US shore power, Mastervolt ChargeMaster 12/25A, Isolation transformer MASS Gi7
- 25m cable
- 2x120V outlets
- Air Conditioning 12000 BTU
- Overboard discharge blackwater
- Bow Thruster
- Windlass bow
- US Nimbus Connect
- Simrad Plotter, MFD EVO4 16"
- Simrad Sonar, xSonic SS60 (Thru-Hull)
- Simrad VHF, RS40 incl. AIS receiver, antenna

### Disclaimer

The company offers the details of this vessel in good faith but cannot guarantee or warrant the accuracy of this information nor warrant the condition of the vessel. A buyer should instruct his agents, or his surveyors, to investigate such details as the buyer desires validated. This vessel is offered subject to prior sale, price change or withdrawal without notice.

Listing MLS by [Yachtr.com](https://www.yachtr.com)

## Allgemeine Information

Hersteller:	Nimbus
Modell:	Commuter 9
Jahr:	2026
Bedingung:	Neu
Motortyp:	

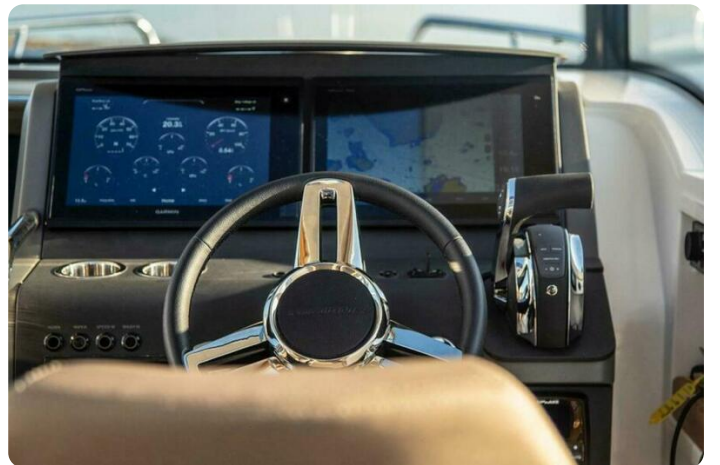
## Messungen

Länge:	30 ft (9.14 m)
Breite:	9 ft (2.74 m)

# Bilder

---







**Nautical Ventures**  
50 SOUTH BRYAN RD.  
FL 33004 DANIA BEACH  
Vereinigte Staaten von Amerika  
Telefon: 1-941-355-5500  
<https://www.nauticalventures.com>

