



Macgregor 26M

£21,995 • Brightlingsea United Kingdom (UK) • Used • 2004

Presented by
 Peter Marchant
 Phone: 44(0)1206302003
Morgan Marine
 The Boatyard, Shipyard
 Estate
 CO7 0AR Colchester
 United Kingdom (UK)



Details

Make:	Macgregor
Model:	26M
Year:	2004
Condition:	Used
Engine:	, 250 hp
Engine type:	
Length:	7.85 m (25.75 ft)
Beam:	2.36 m (7.74 ft)
Cabins:	0
Berths:	0



Morgan Marine



7zea.com

Description

EN

Set sail with this 2004 MacGregor 26M, a unique and much-loved trailerable sailing yacht thats as comfortable cruising inland waters as it is exploring the open sea. Powered by a reliable Yamaha F50 outboard, this sail/motor cruiser combines the best of both worlds - the thrill of sailing and the convenience of motorised travel. Lovingly maintained and in good condition, this MacGregor 26M includes: Admiral 2-Wheel Trailer - Easy to tow and launch, making it perfect for weekend getaways or extended adventures, 4 comfortable Berths, galley area, sea toilet, sails and rigging system. This MacGregor is a standout in its class - known for its lightweight, water ballast system, and ease of handling. Whether you're a seasoned sailor or just starting out, this is the perfect boat for unforgettable memories on the water. Contact Morgan Marine today for early viewings - This is a highly specified example that wont be around long!!

Deck: Mast raising system. Furling system. Mainsail fully battened crusader sails of approx 2019. Jib crusader sails approx 2006. Gennaker with sheets and blocks approx 2007/8. Original mainsail Macgregor, battens stitched in. Original Jib Macgregor with sun strip. Anchor, Fortress plus 5m chain + 30m wrap and terminal fittings in anchor locker. 4x Fenders, 4x lines (2x short, 2 long). Genoa car x2. Sail bags x 5. 2:1 lines and blocks for centreplate and rudders. Reefing system for main sail. Mainsail cover. Spinnaker halyard and block. Twin clutches and main halyard plus track block with twin pulley block, single blocks x2 and long shackle. Masthead and Crosstree burgee halyards. Ensign pole and bracket. Life ring and Lifebuoy light. Whisper pole. 2 ton ratchet strap. Floating winch handle and original non locking spare. Winch handle pocket. Whisper pole. Modified Bluewater Yachts steering and quick release bar 2005. Stainless steel pulpit and pushpit with guardrails.

Cabin: Forward V shaped double berth with hatch to deck. Stern double berth section. Saloon area with 2x bench style cushion seating with backrest and table. Interior carpets. Galley area with sink and lots of storage. Toilet compartment with fitted sea toilet (spare valve set). Fire blanket.

Cockpit: Cockpit steering wheel with engine throttle control. Cockpit lockers with removable fronts and latches.

Electronics: Standard Horizon chart plotter with C-map. Nasa Clipper log and depth gauges with covers (2018). Plastimo compass with cover (2004). Bilge pump with automatic float valve. LED bulbs throughout. 12v socket in cabin.

Machinery: 2004 Yamaha F50 CETL outboard with power trim and tilt. Fuel tank 6 US gallons + fuel line. New cambelt 2022. 2x Full sets of engine, engine lock, hatchway and anchor locker keys. Kill cord. Engine lock.

2 Wheel Admiral trailer 2022 with jockey wheel and winch.

General information

Make:	Macgregor
Model:	26M
Year:	2004
Condition:	Used

Engine

Engine:	, 250 hp
Engine type:	

Measurements

Length:	7.85 m (25.75 ft)
Beam:	2.36 m (7.74 ft)
Deep:	1.75 m (5.74 ft)
Weight:	0 ()

Accommodation

Cabins:	0
Berths:	0



Macgregor 26M - Main



Macgregor 26M - toilet



Macgregor 26M - forward berth



Macgregor 26M - back berth



Macgregor 26M - stern



Macgregor 26M - ladder



Macgregor 26M - saloon



Macgregor 26M - rudder



Macgregor 26M - top view



Macgregor 26M - mast



Macgregor 26M - cockpit



Macgregor 26M - back



Macgregor 26M - side



Macgregor 26M - side view



Macgregor 26M - railings



Macgregor 26M - engine



Macgregor 26M - engine Yamaha



Macgregor 26M - rudder steering



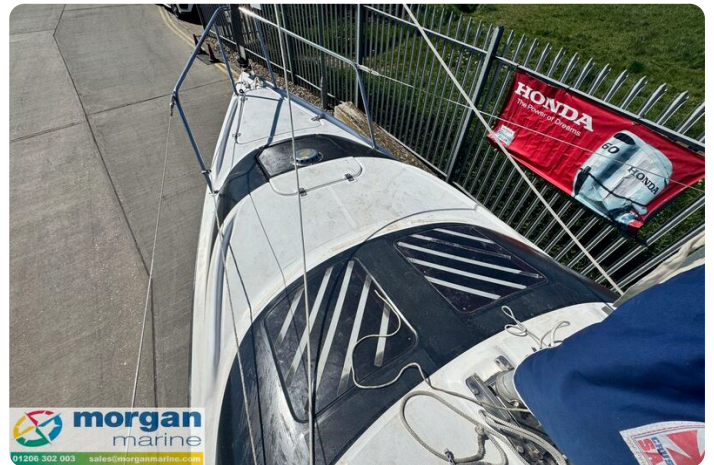
Macgregor 26M - hull



Macgregor 26M - hull bottom



Macgregor 26M - deck



Macgregor 26M - hatches



Macgregor 26M - anchor locker



Macgregor 26M - anchor



Macgregor 26M - cockpit



Macgregor 26M - fuel tank



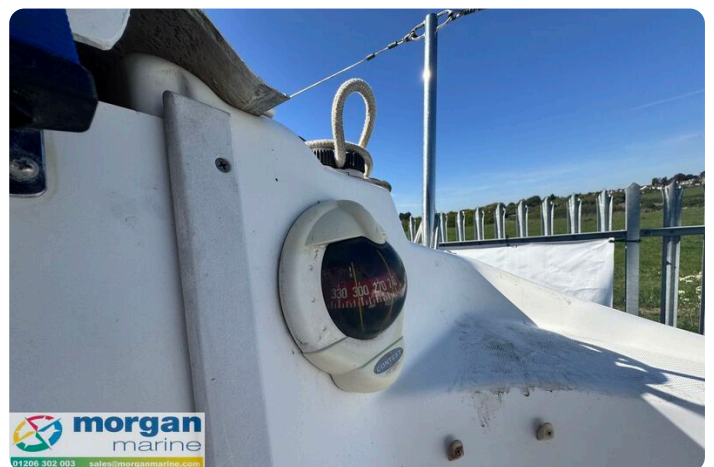
Macgregor 26M - steering wheel



Macgregor 26M - gauge



Macgregor 26M - clipper



Macgregor 26M - compass



Macgregor 26M - hatch to saloon



Macgregor 26M - sink



Macgregor 26M - saloon seating

Morgan Marine

The Boatyard, Shipyard Estate
CO7 0AR Colchester
United Kingdom (UK)

Phone: 44(0)1206302003

<https://morganmarine.com>

