



# Fairline Targa 43

£139,950 • Southern Spain Spain • Used • 2003

## Presented by

Justin Garwell  
Phone: +44 (0) 1305 766504  
**JD YACHTS LIMITED**  
80 THE ESPLANADE  
DT4 7AA WEYMOUTH  
United Kingdom (UK)



## Details

Make:	Fairline
Model:	Targa 43
Year:	2003
Condition:	Used
Engine:	Volvo TAMD 75P EDC, 480 hp
Engine type:	
Fuel type:	Diesel
Length:	13.74 m (45.08 ft)
Beam:	3.8 m (12.47 ft)
Cabins:	0
Berths:	0



JD YACHTS  
LIMITED



7zea.com

# Description

ENG  
2003. 2 x 480 HP Volvo TAMD 75P EDC  
6 berths in 2 cabins  
Lying: Southern Spain Spain

ENG  
Extras

Raymarine e120 GPS Chartplotter  
Raymarine Radome  
Onan Generator  
Air Conditioning  
Passerelle  
Cockpit Griddle

Standard Specification

Galley

Recessed two burner hob, with oven and grill  
3 cu.ft. (85L) refrigerator with automatic 12v/240v change-over  
Sink and drainer with hot and cold mixer tap  
Solid worktop with sink and hob covers  
Two stainless steel portholes  
Halogen ceiling and worktop lights  
Cupboards and crockery stowage  
Lacquered cupboard doors  
Stainless steel grab rail  
Extractor fan

Engine Mechanical

Engine room soundproofing  
GRP engine access hatch with stainless steel pneumatic support struts  
Water cooled engine exhausts with silencers and side outlets  
Aerodynamically designed engine air intakes  
Automatic engine bay fire extinguishers  
Stainless steel shafts (TEMET)  
4-blade contra-rotating Manganese Bronze propellers  
Manganese Bronze P brackets  
Balanced rudders  
Cathodic protection  
Automatic bilge pumps for engine bay and rudder bay with manual on override  
Electric engine bay fans  
Engine bay lights  
Sea cocks on all inlets/outlets below waterline  
All stern gear, engines, fuel tanks etc. electrically bonded  
Exhaust overheat warning system  
Dripless shaft seals

Hull

Designed by Bernard Olesinski and the Fairline design team  
Deep V forward; 18° deadrise aft  
Full length moulded spray deflectors  
Isophthalic gel coat backed by isophthalic resin-rich powder-bound glass mat  
All gel coat and glass fibre laid up by hand, with unidirectional and woven rovings  
Transverse and longitudinal strengthening stringers throughout hull  
Hull/deck join bolted and bonded  
Coloured hull top band  
6hp bowthruster

Deck And Hull

Stainless steel stemhead roller  
Delta anchor  
20 fathoms chain  
Twin stainless steel fairleads and bow, spring and stern cleats  
Grab rail and cleat on each transom wing  
Stainless steel pulpit and pushpit  
Stainless steel rubbing strake  
Full set of IMCO navigation lights  
Riding light  
Water and fuel fillers  
Moulded non-slip deck surface  
Transom gate from cockpit to integral teak-laid bathing platform  
Hot and cold water transom shower  
Concealed transom ladder  
Recessed self-draining area on foredeck for optional coachroof sun cushions  
Remote control searchlight

Electrical

All 240 volt and 12 volt circuits protected by circuit breakers on main electrical load control panel in saloon  
Isolating switches to all batteries

Cockpit

Self-draining  
C-shaped central dining area  
Liferaft stowage  
Folding table on height adjustable leg  
Cockpit bar with sink, hot and cold water, wine and drinks cooler, glass and bottle storage  
Stowage lockers under cockpit seats  
Aft sunbed with non-absorbent foam cushions  
Warp and fender stowage lockers under sunbed  
Transom gate  
Side deck access steps from both walkways  
Teak-laid floor throughout  
Two part cockpit hood, forward section converting to sun canopy  
Drinks holders  
Cockpit lights under GRP arch and in walkways  
Tonneau cover  
Heavy duty 12v socket

Standard Features

Horizontally and vertically adjustable helm seat with lift up semi-bolster section  
Tilt-adjustable steering wheel  
Reversible electric anchor winch  
Electra-hydraulic trim tabs with cathodic protection  
Echosounder and speedometer/distance log with sea water temperature read out  
VHF radio telephone  
Stereo radio/CD player with saloon and cockpit speakers  
Hot and cold water transom shower  
Wine and drinks cooler in cockpit  
2 part cockpit hood on stainless steel frame converts to sun canopy and stows easily against GRP arch  
6hp bowthruster  
Delta anchor  
20 fathoms chain  
Horn  
Wrap around, alloy framed, curved toughened glass windscreen  
Stainless steel rubbing strake  
50 amp regulated battery charger  
Teak-laid cockpit floor and bathing platform  
Hangar for concealed stowage of optional dinghy and outboard beneath aft sun deck

Sunbathing cushions in non-absorbent foam for aft sundeck  
Coloured hull top band

General information

Make:	Fairline
Model:	Targa 43
Year:	2003
Condition:	Used

Engine

Engine:	Volvo TAMD 75P EDC, 480 hp
Engine type:	
Fuel type:	Diesel

Measurements

Length:	13.74 m (45.08 ft)
Beam:	3.8 m (12.47 ft)
Deep:	1 m (3.28 ft)
Weight:	10000 ()

Accommodation

Cabins:	0
Berths:	0

Images



Image courtesy of JD Yachts



Image courtesy of JD Yachts





Image courtesy of JD Yachts



Image courtesy of JD Yachts



Image courtesy of JD Yachts



Image courtesy of JD Yachts



Image courtesy of JD Yachts



Image courtesy of JD Yachts





Image courtesy of JD Yachts



Image courtesy of JD Yachts

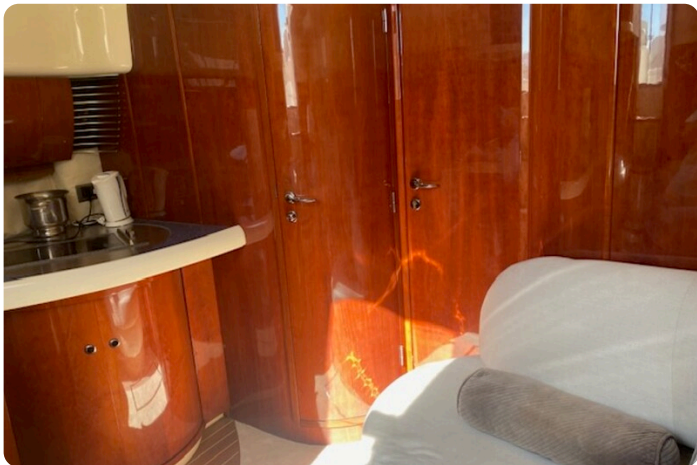


Image courtesy of JD Yachts



Image courtesy of JD Yachts

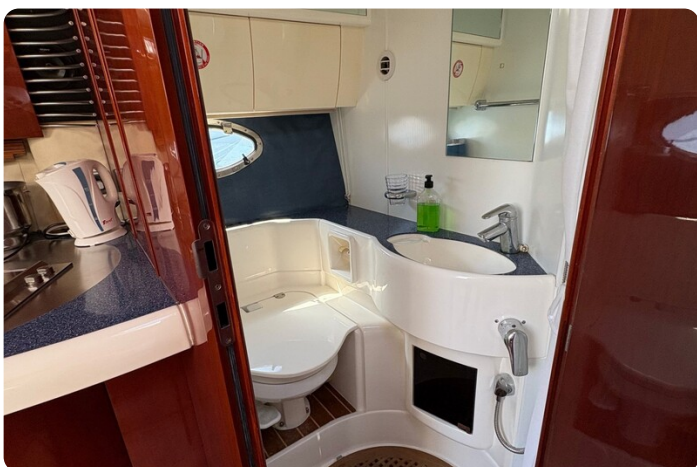


Image courtesy of JD Yachts



Image courtesy of JD Yachts



Image courtesy of JD Yachts



Image courtesy of JD Yachts

**JD YACHTS LIMITED**

80 THE ESPLANADE

DT4 7AA WEYMOUTH

United Kingdom (UK)

Phone: +44 (0) 1305 766504

<http://jdyachts.com>



 YACHTS.